


DIGIMAKER 6.0



Digimaker Server Manager 6.0 User Manual

Content

1 Introduction	3
1.1 Website Tab	3
1.2 Version	4
2. Creating a Website	5
3. Digimaker Services	14
3.1 Services in NLB/Clustered environment	14
3.2 Setting up Statistics using Server Manager	15
3.2.1 Running statistics on the web server	15
To run statistics on the web server	15
3.2.3 Running statistics on an existing web site	18
4. Deleting a Website	25
5. Website Administration	27
5.1 Website Details	27
5.2 Digimaker Directory Services	28
5.2.1 Configuring Directory Services Integration	29
5.2.2 Manual Import/Export	34
5.3 Authentication	37
5.3.1 Digimaker Forms Authentication	38
5.3.2 Digimaker and Directory Service Forms Authentication	38
5.3.3 Windows Integrated Authentication	38
5.4 Website Directories	39
5.5 Configuration	40
5.5.1 Friendly URL	41
5.6 Customer Details	43
6. Providers	47
6.1 Membership Provider:	48
6.2 Profile Provider	50
6.3 Role Provider:	51
6.4 Permission Provider	51
7. Upgrading a Website	53
8. Quick Start	55
9. Troubleshooting Digimaker Server Manager	56
9.1 Missing Registry key	56
9.2 Certificate Not Installed.	57

1 Introduction

Digimaker Server Manager is used for configuring both the Digimaker CMS, and Digimaker based websites on servers that host Digimaker CMS. It displays detailed information related to all the websites installed on IIS and enables you to create, delete, manage, and upgrade Digimaker websites.

1.1 Website Tab

The **Websites Tab** of the Server Manager displays all websites installed on Internet Information Server (IIS) in the form of an expandable tree.

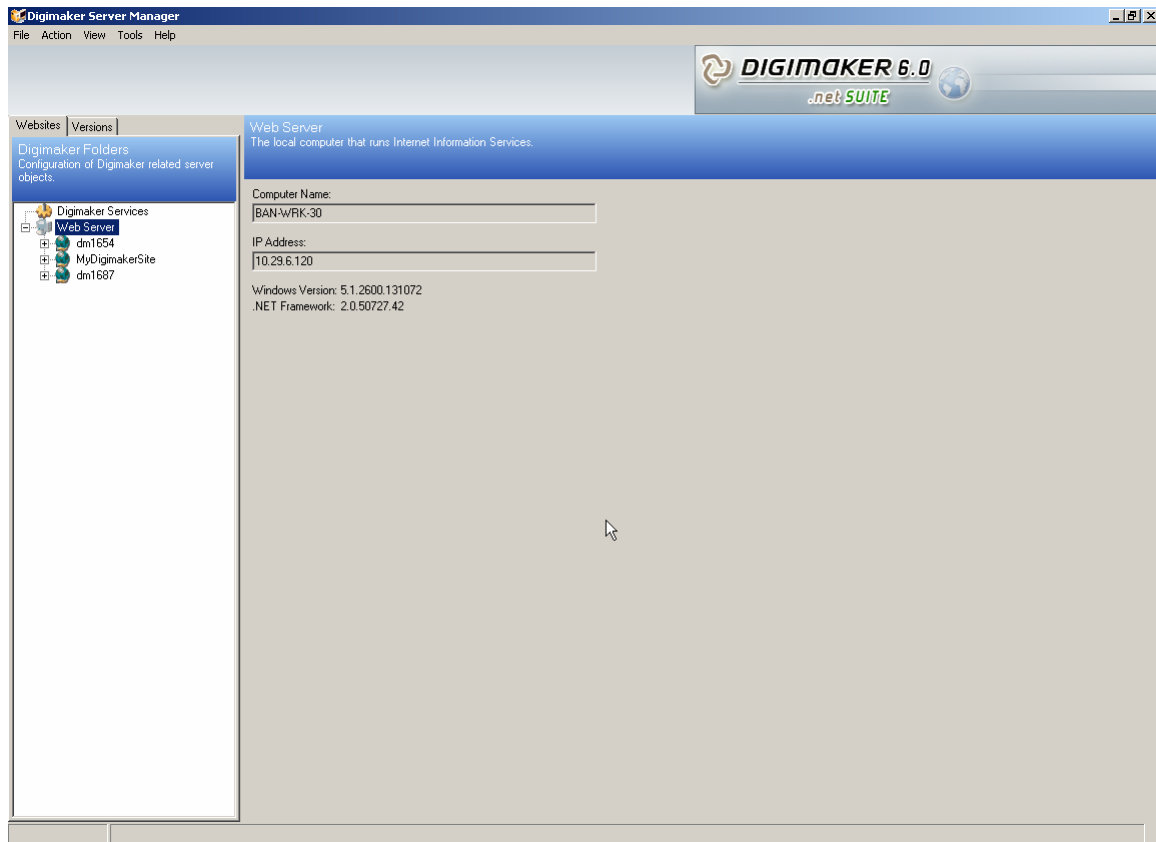


Figure 1-1: Website Tree

1.2 Version

The **Versions** tab shows files stored in the Global Assembly Cache (GAC), which is a repository for library files that are shared across Digimaker websites. The following screen lists the assemblies and their versions.

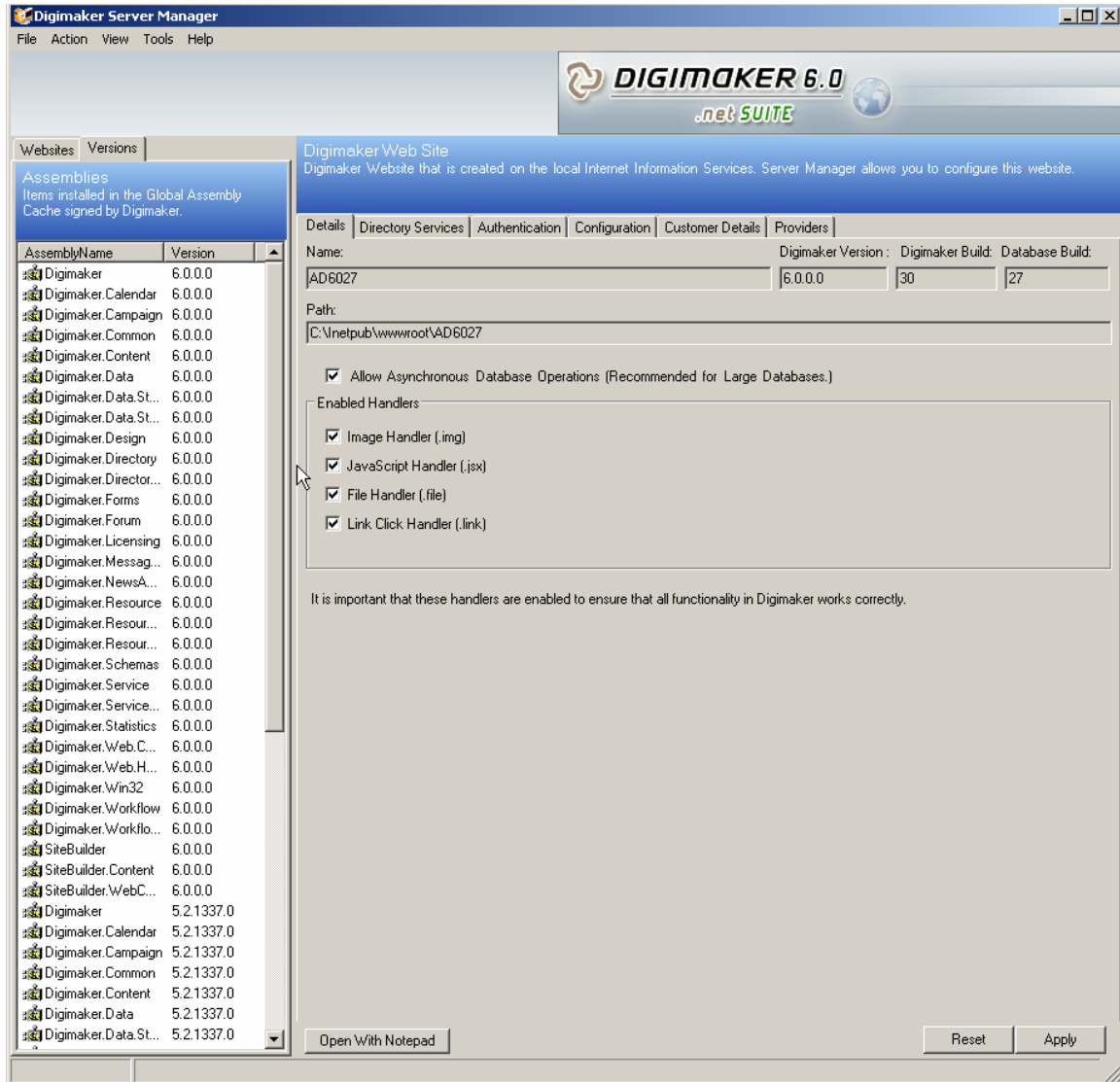


Figure 1-2: Versions Tab

2. Creating a Website

To create a website,

1. In the **Websites Tab**, right click on **Web Server node** and select **Create Website**. This starts the **Create new website wizard** and displays the **license file** screen.

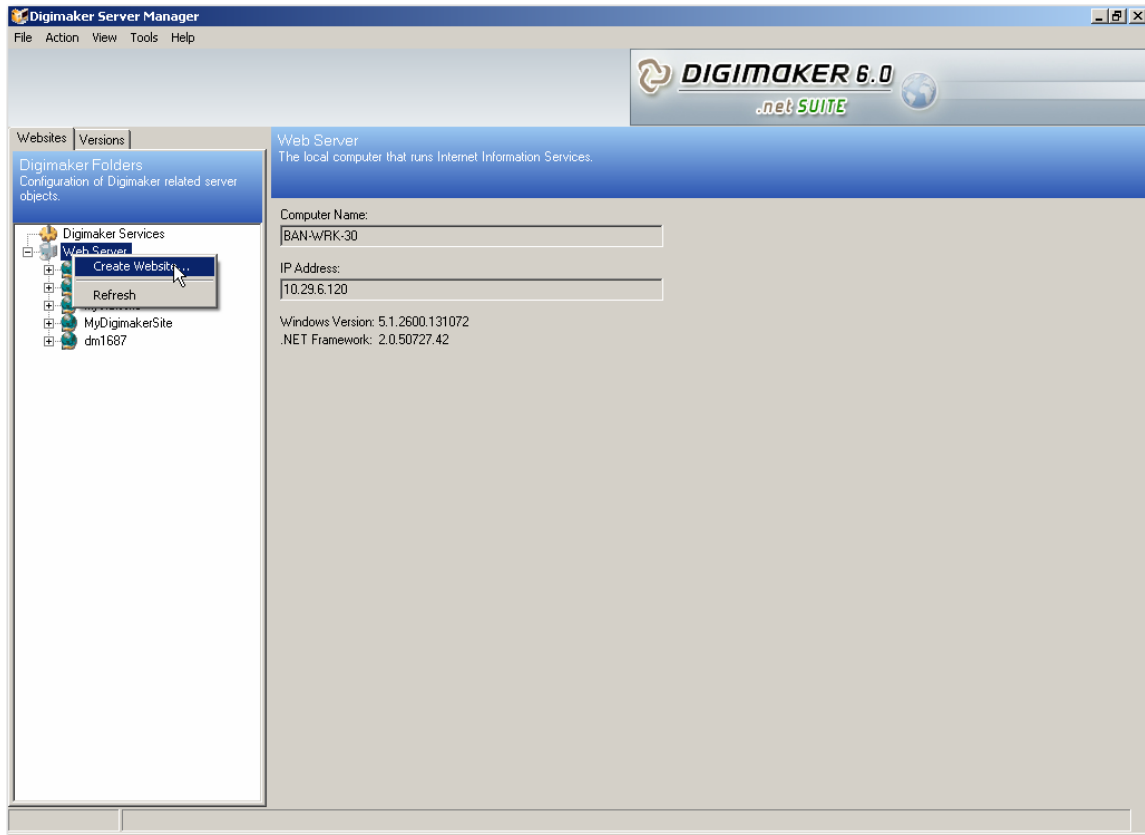


Figure 2-1: Creating a Website

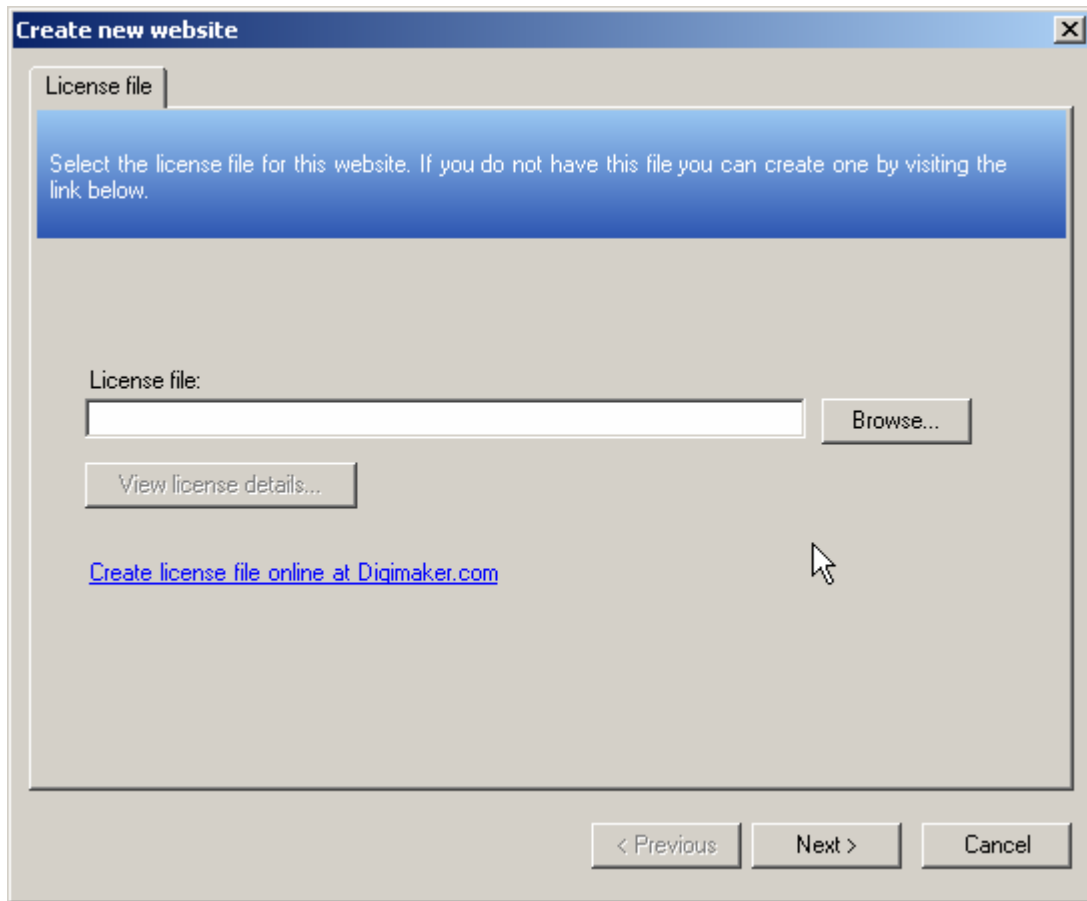


Figure 2-2: License File

2. Click **Browse** to locate the license file and attach it and click **Next**. This displays the **Site name and location** screen.

3. Enter the site name and location. This is the name that appears in the **Websites Tab** after the website has been created. All website files are stored in the specified location. The list of valid domains is automatically read from the license file. Click **Next** to display the **Digimaker version and site starter kit** screen.

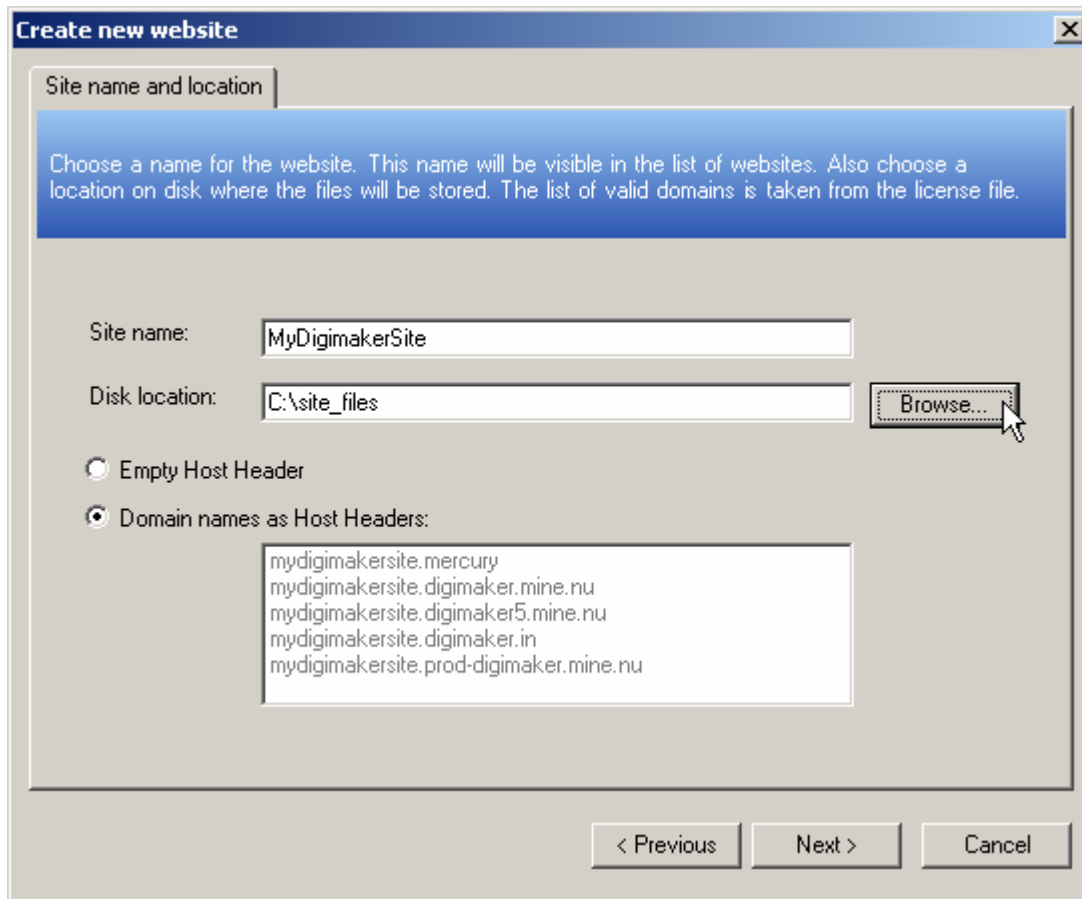


Figure 2-3: Site Name and Location screen

4. If you have more than one version of Digimaker installed, a drop-down list of all versions is displayed. Choose the version of Digimaker you want to use for the new site.

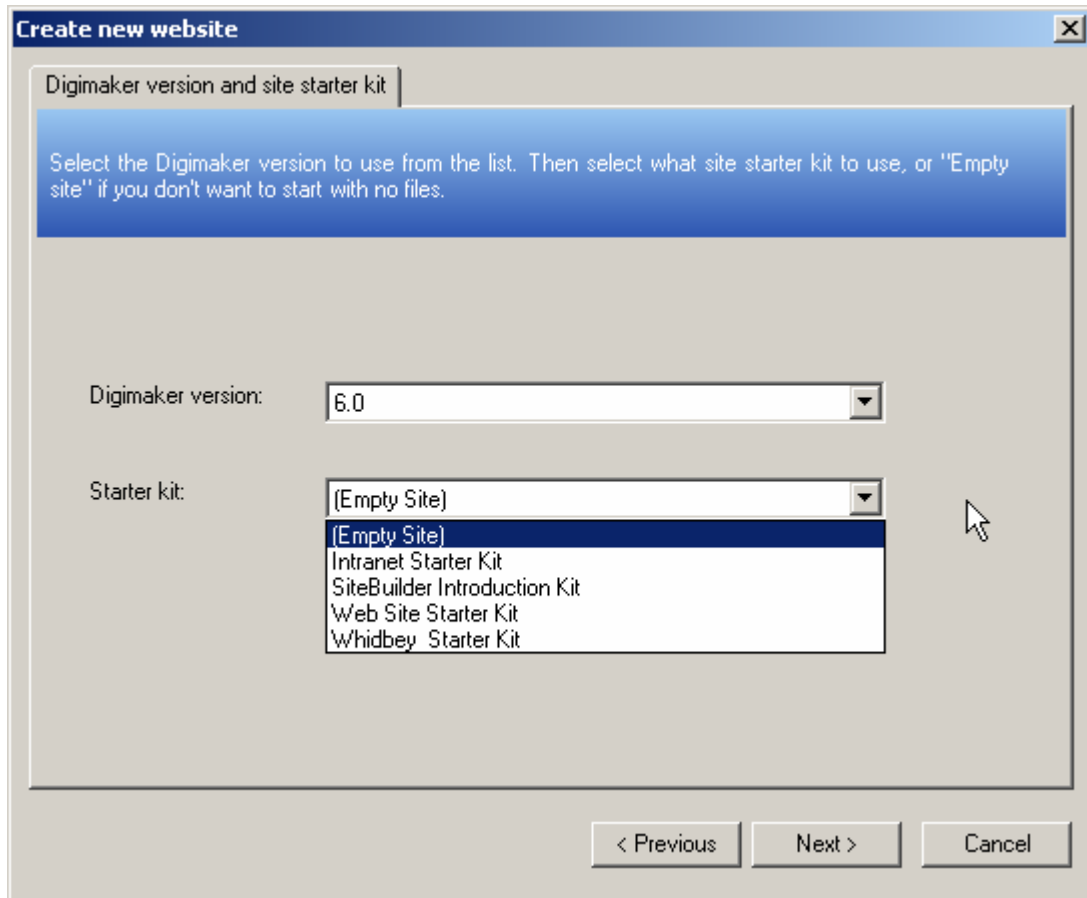


Figure 2-4: Digimaker version and Starter Kit screen

6. Choose a **starter kit**. A **starter kit** provides you with a set of relevant files that help you create a website. Choose **Empty Site** if you want to start without any files. Click **Next** to display the **Database** screen.

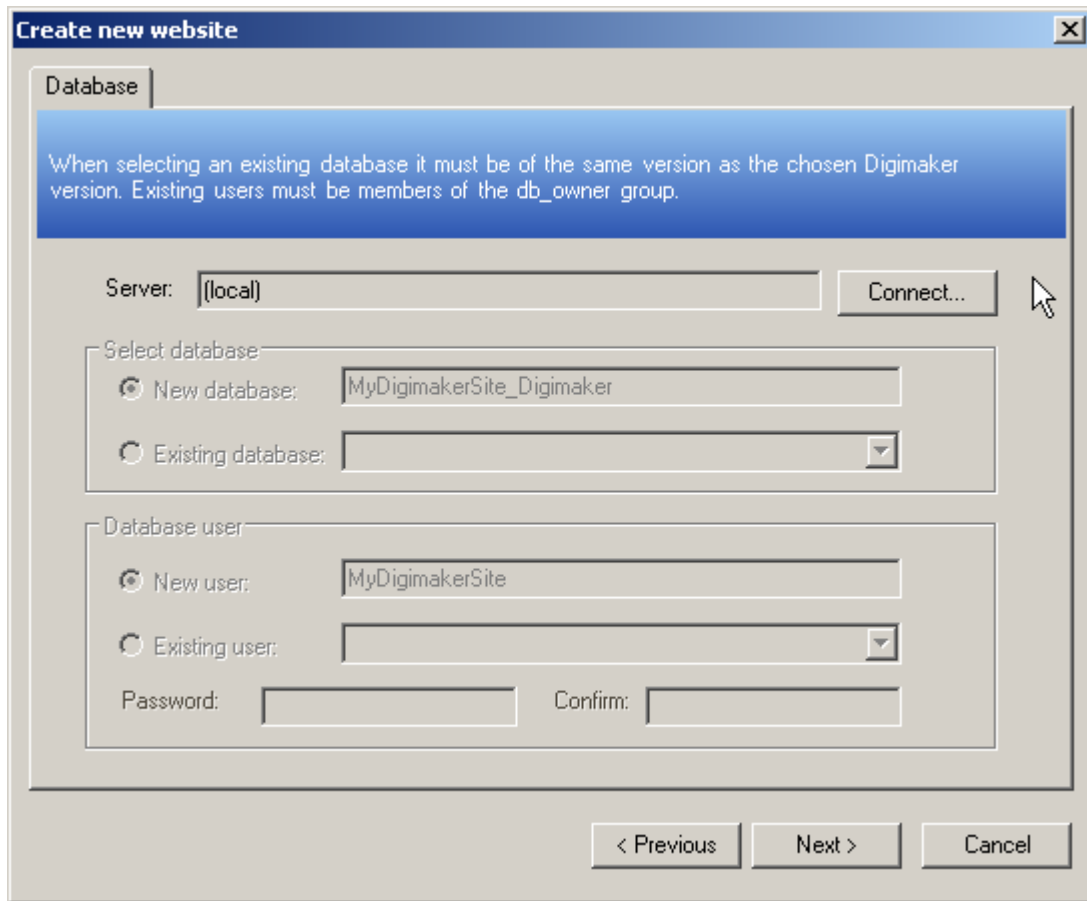


Figure 2-5: Database Server Name

7. Click **Connect** to displays the **Database connection** dialog box.
8. In the **Database connection** dialog box, enter the database server name. You can either use Windows Authentication, or login as a user who has enough permissions to create a database and database users by entering the appropriate username and password. Click **OK**. This connects to the database server where you want to create the website database.



Figure 2-6: Database connection Dialog

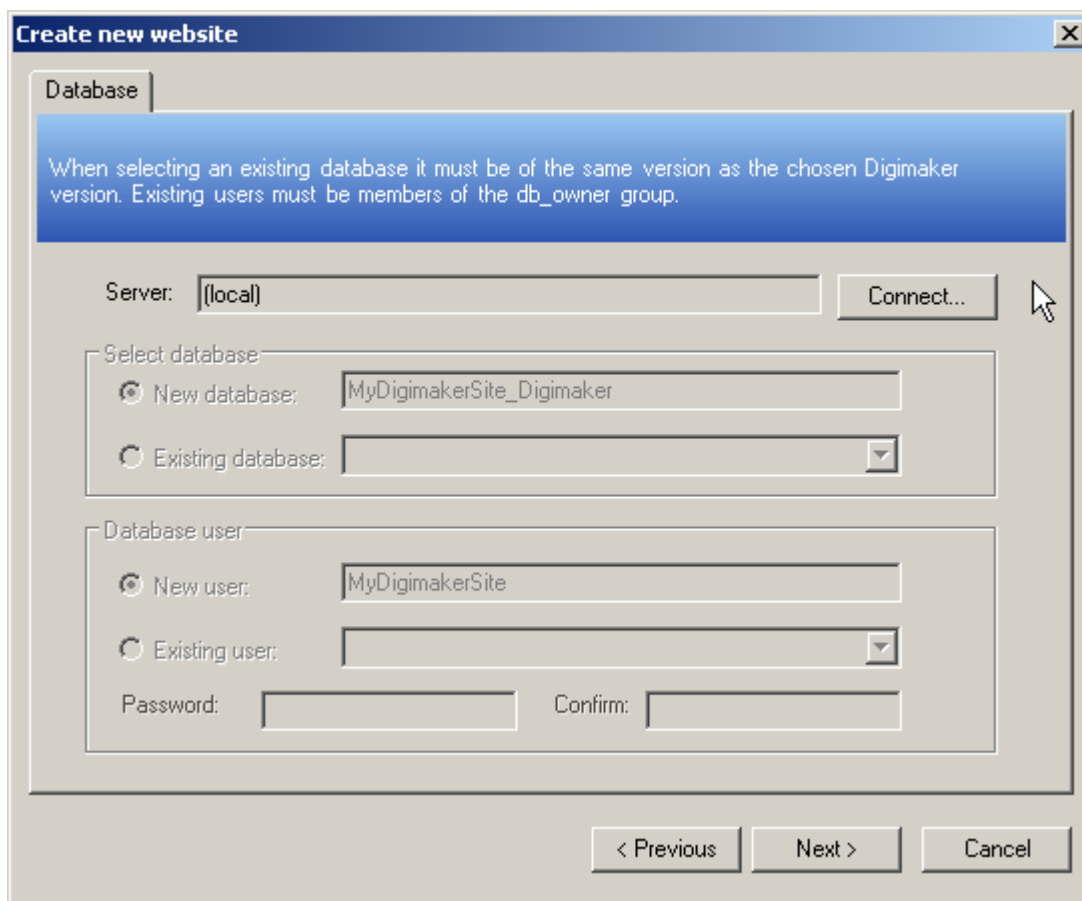


Figure 2-7: Database screen

9. To create a new database, enter a name for the database.
10. Choose **Existing database** and select an appropriate database from the drop-down list if you want to use an existing database. When you choose an existing database, ensure that it corresponds to the Digimaker version that you have chosen. Choosing a conflicting version will cause an error. Existing users must be members of the db_owners group.
11. To create a new database user, enter a name for the new database user along with a password and confirm the password.
12. Choose **Existing user**, select an appropriate database user from the drop-down list and enter the valid password when you want to use an existing database user.
13. Click **Next** to display the **Customer Details** screen.

14. Enter an appropriate name for the customer. If you chose a new database the customer name defaults to the site name. You can also change the GUID other wise digimaker generates a new GUID.

Note! In order to make two different sites have the same statistics the Unique ID must be the same.

Customer Details.

Supply customer details. Normally you will just edit the "Name" here.
In order to make two different sites have the same statistics the Unique ID must be the same

Customer Details

Name: MyDigimakerSite

Unique ID : 60553d61-d376-47d7-927b-75f697ad240b

As you have chosen a new database, we are defaulting the Customer Name to that of SiteName and Customer-GUID to a new GUID.

< Previous Next > Cancel

Figure 2-8: Customer Details Screen

15. Click **Next** to display the **Login and Email** screen.

16. In the **Admin Login Information** section, enter the administrator password and e-mail address.
17. Enter the **SMTP Server** name and the **Reply Address in the E-mail Settings** section.

Create new website

Login and Email

Admin Login Information contains information about the Admin user that is created during installation. The Server E-mail Settings contains settings for the server to be able to send out emails.

Admin Login Information

Login name: Admin

Password: *****

Confirm password: *****

Email address: admin@mydigimakersite.com

Server E-mail Settings

SMTP Server: mail.mysite.com

Reply address: admin@mydigimakersite.com

< Previous Next > Cancel

Figure 2-9: Login and Email

18. Click **Next** to bring up the **Finished** screen. You can click previous and change your settings at any time during this process.

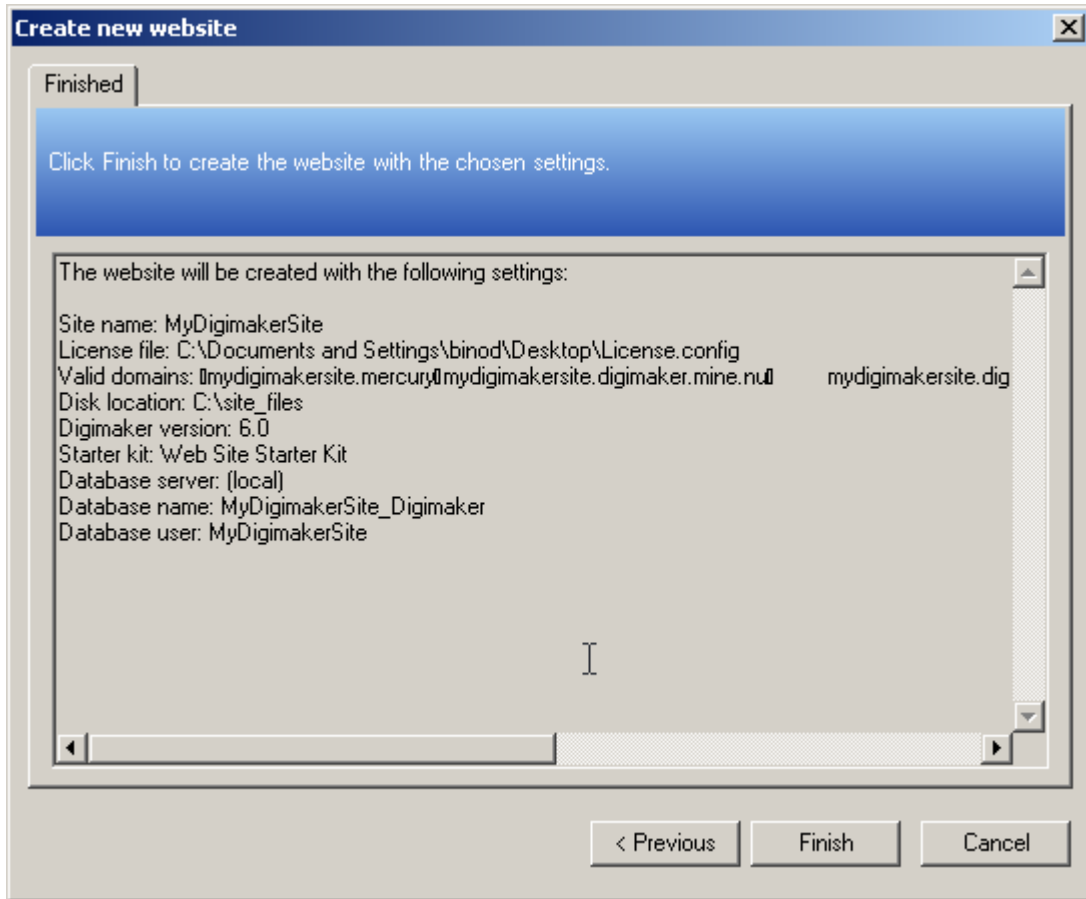
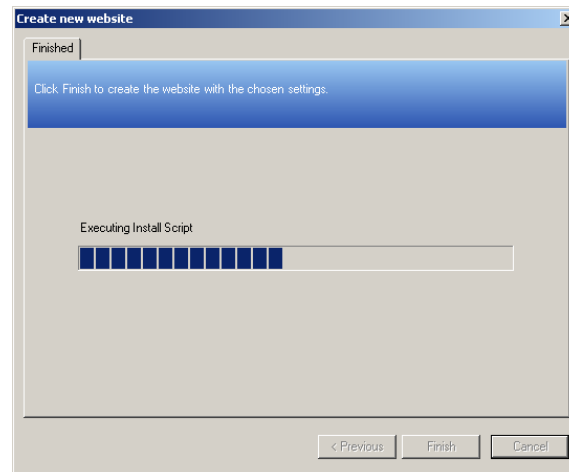


Figure 2-10: Finished screen

19. The Finished screen displays all the configuration settings you selected for the new website. Click the **Finish** button to start the process



2-11: Website creation in progress

3. Digimaker Services

The node called **Digimaker Services** in the **Websites Tab** enables you to control the services you wish to run on Digimaker. In Digimaker, services are used to perform special tasks such as the collection of statistics or sending newsletters. Figure 3-1 shows the Digimaker Services screen. You can use the Start, Stop and Restart button to control the Digimaker Service. Digimaker uses a single Windows Service called the **Digimaker Service** as host for running other Digimaker services. You can enable or disable a particular service by selecting the check box next to the service.

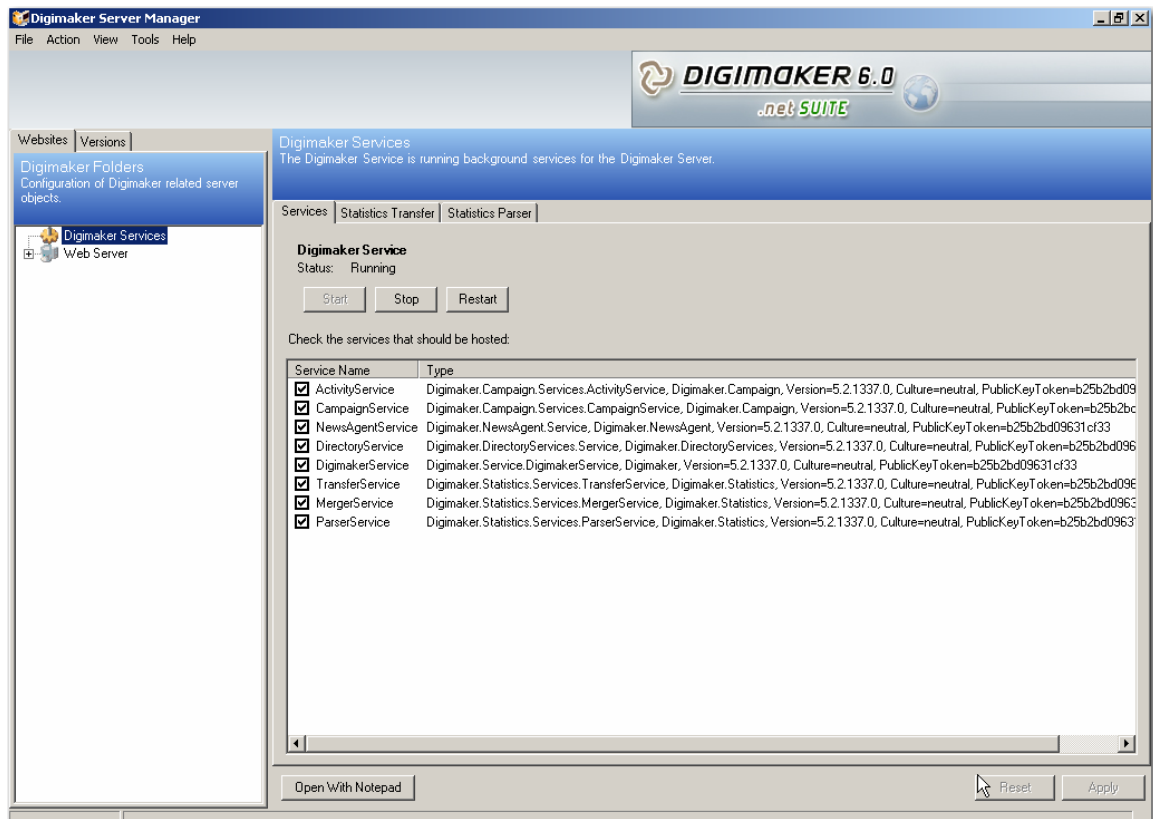


Figure 3-1: List of Services

3.1 Services in NLB/Clustered environment.

If Digimaker sites are running on Network Load Balancing (NLB)/Clustered servers, **Digimaker Services** should be running on any one of the Clusters.

3.2 Setting up Statistics using Server Manager

Statistics can be enabled on the web server or can be run from a separate server.

3.2.1 Running statistics on the web server

To run statistics on the web server

1. Enable the three statistics services, *TransferService*, *MergerService* and *ParserService* from the **Services Tab** of **Digimaker Server Manager** on the web server.
2. Ensure **Local/Network Share** is selected on the **Statistics Transfer Tab** of **Digimaker Server Manager** on the web server.

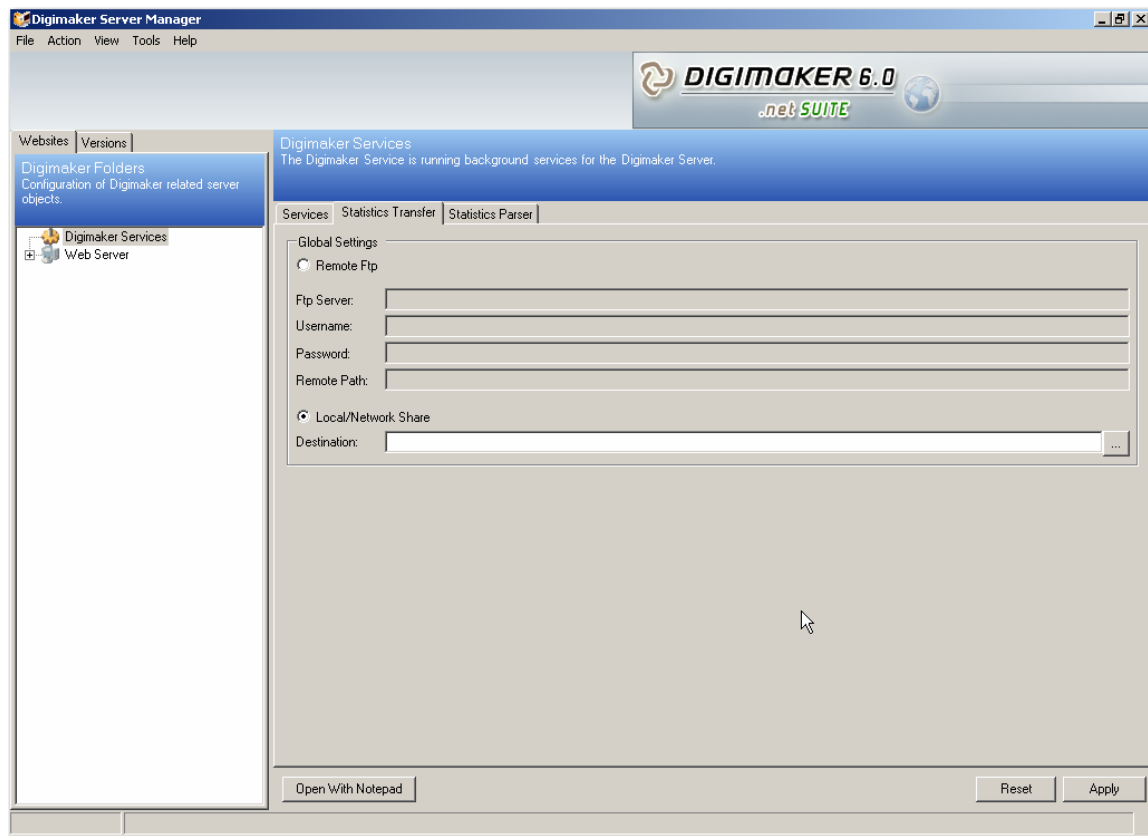


Figure 3-2: Local/Network Share selected on the 'Statistics Transfer' screen

3. If no path is entered into the **Destination** field, a default value is used.

- When a path is selected for this field then the same path must also be used in the **Log Files Drop Folder** field on the **Statistics Parser Tab**. Figure 2-5 shows the **Statistics Parser Tab**.

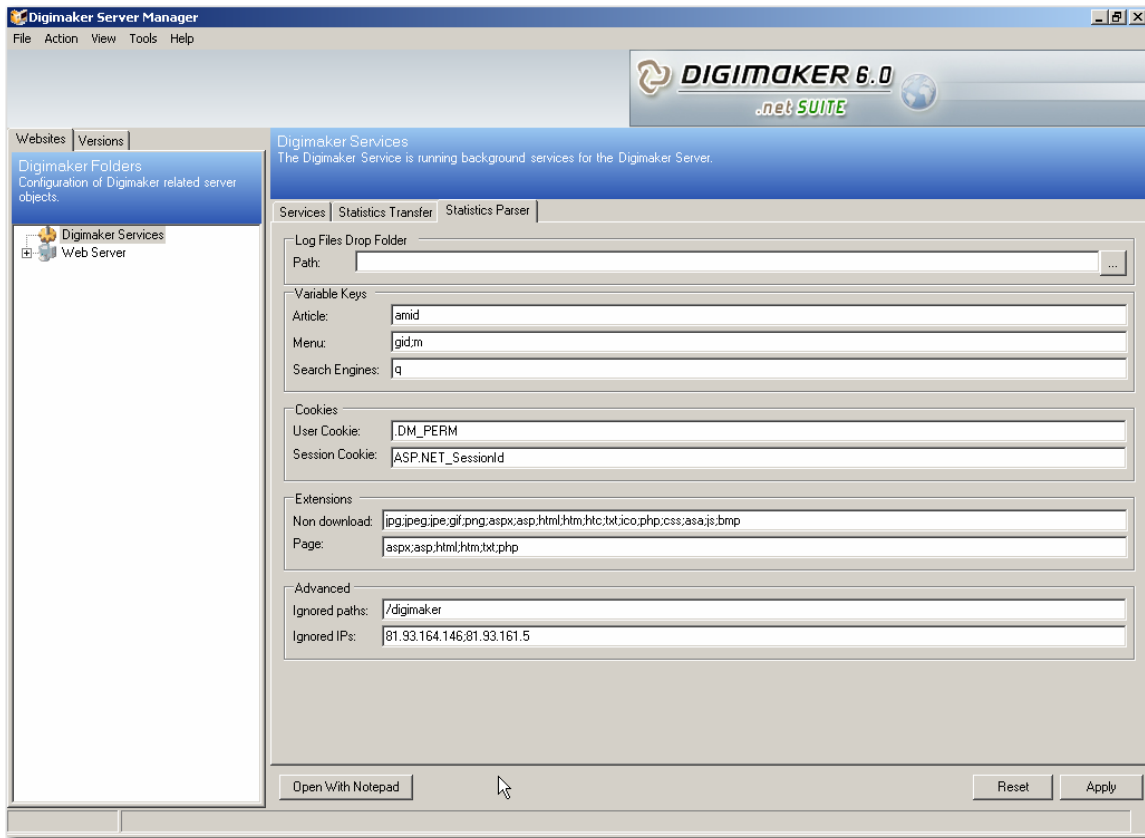


Figure 3-3: Statistics Parser

- Click **Apply** to save the changes.

3.2.2 Running statistics on a separate server

To run statistics on a separate server

1. Install Digimaker Server on the server (the computer, which we will refer to now as statistics server).
2. Enable the *ParserService* and *MergerService* from the **Services Tab** of the statistics server.
3. Enable *TransferService* from the **Services Tab** of **Digimaker Server Manager** on the web server.

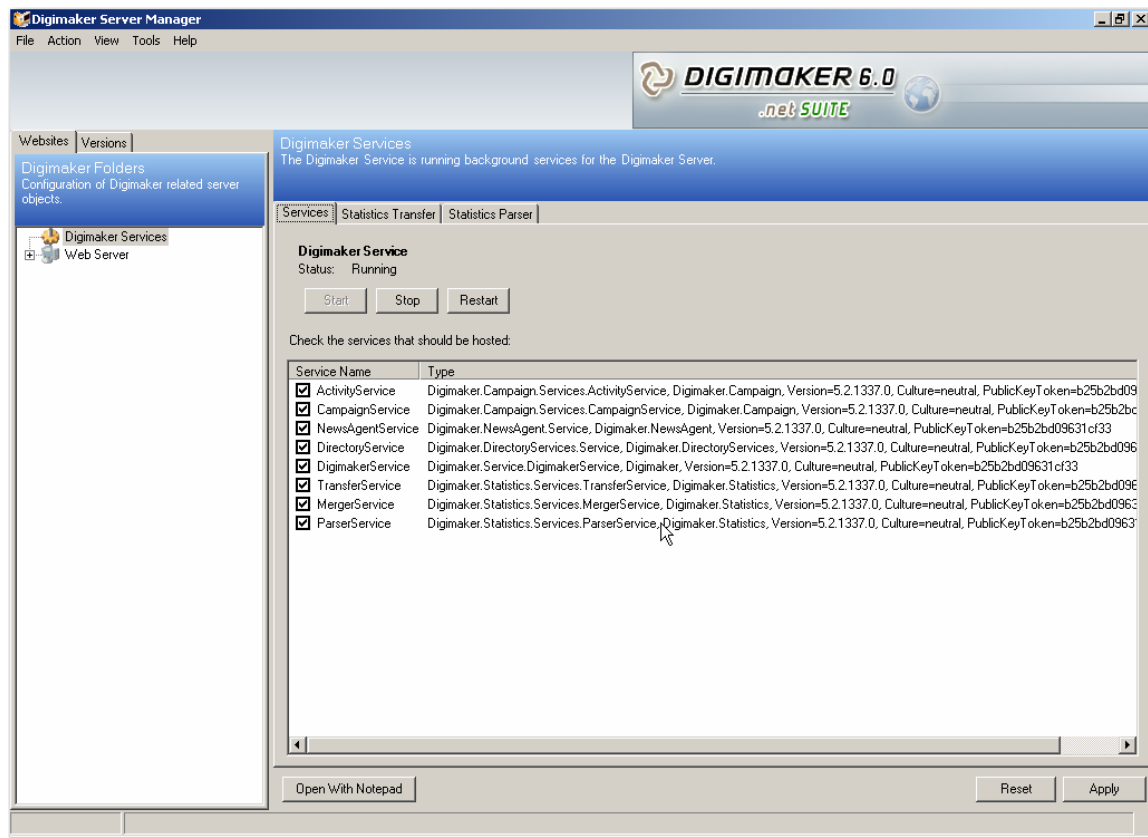


Figure 3-4: Services Tab

The log files of the web server are transferred to the statistics server by configuring a **FTP** or a **network share** on the **Statistics Transfer Tab** of **Digimaker Server Manager** on the web server.

3.2.3 Running statistics on an existing web site

To add statistics to an existing website

1. In the **Websites Tab**, right-click on the website name to display a pop-up menu.

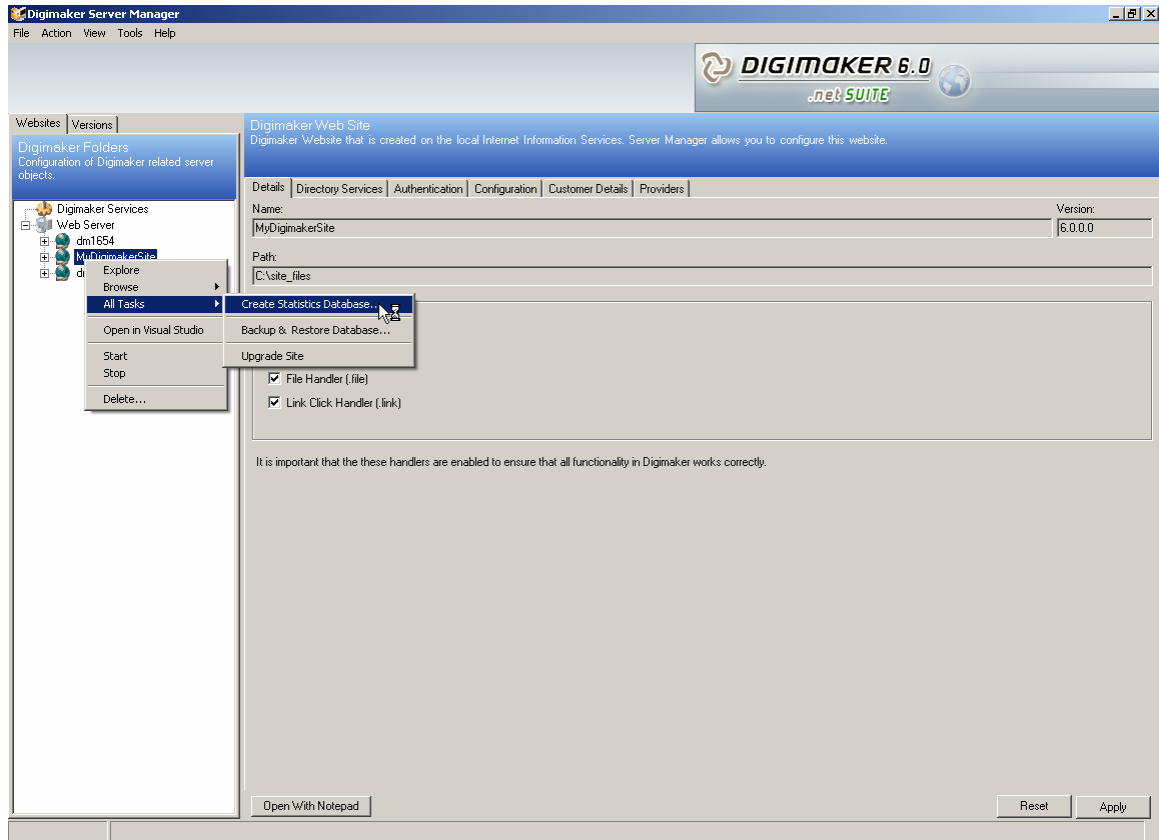


Figure 3-5: Creating Statistics Database

2. Choose the **All Tasks > Create Statistics Database** option from the pop-up menu. This starts the **Create Statistics Database** wizard. The site name and location screen displays the site name and location of the chosen website.

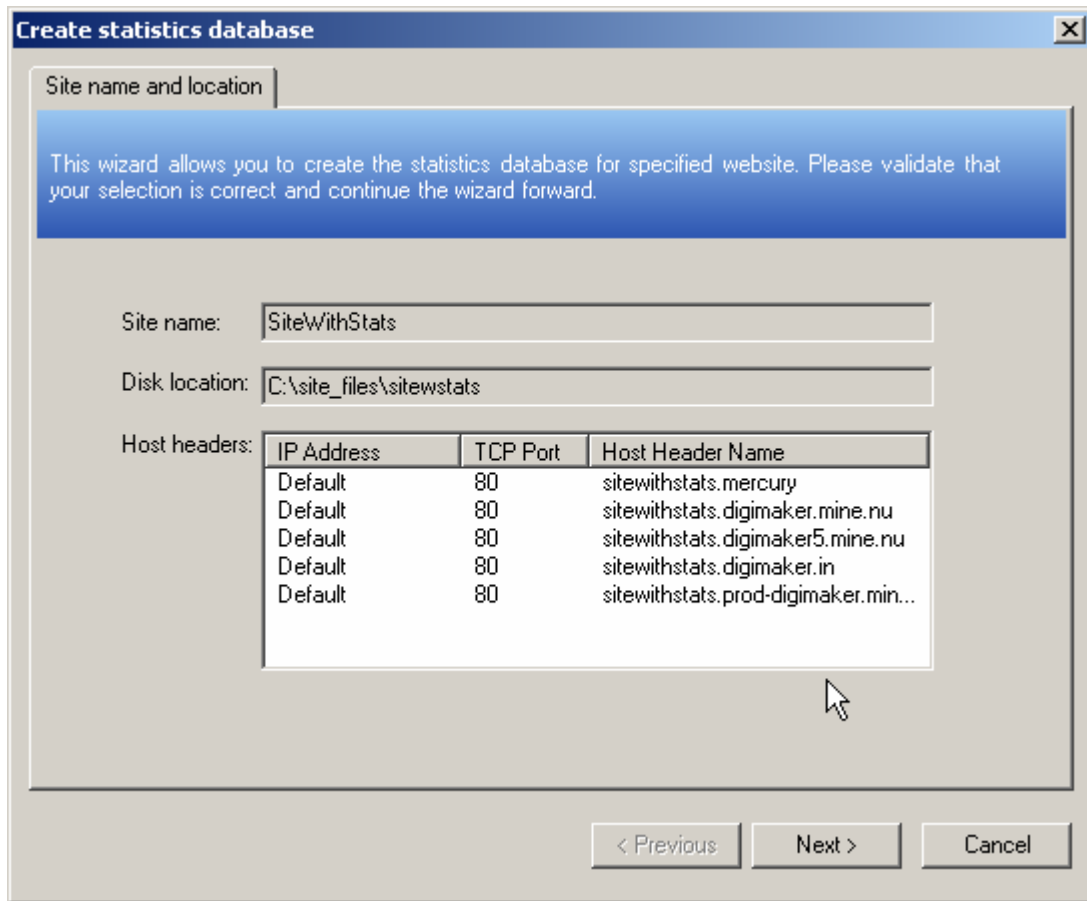


Figure 3-6: Create Statistics Database

3. Click **Next** to display the **Database** screen.

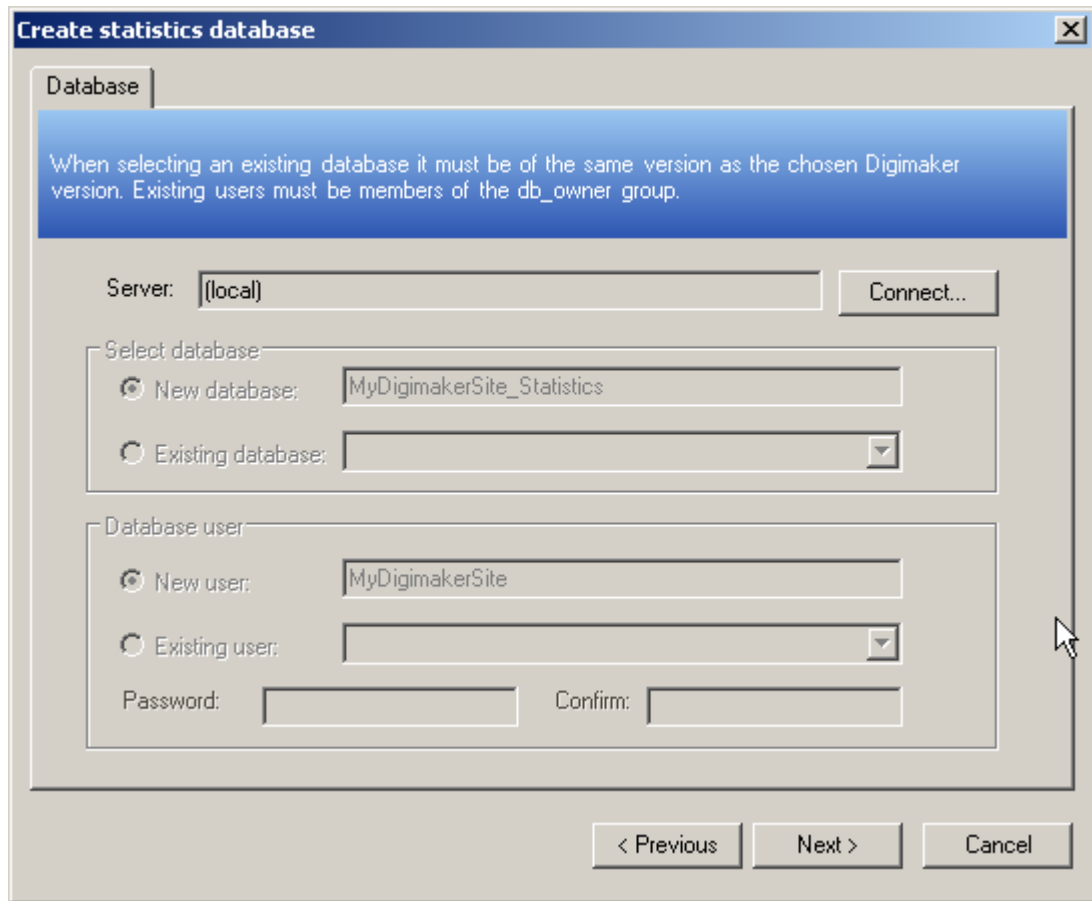


Figure 3-7: Database

3. Click **Connect** to displays the **Database connection** dialog box.

4. In the **Database connection** dialog box, enter the database server name. You can either use Windows Authentication or login as a user who has enough permissions to create a database and database users by entering the appropriate username and password. Click **OK**. This connects to the database server where you want to create the statistics database.



Figure 3-8: Database connection

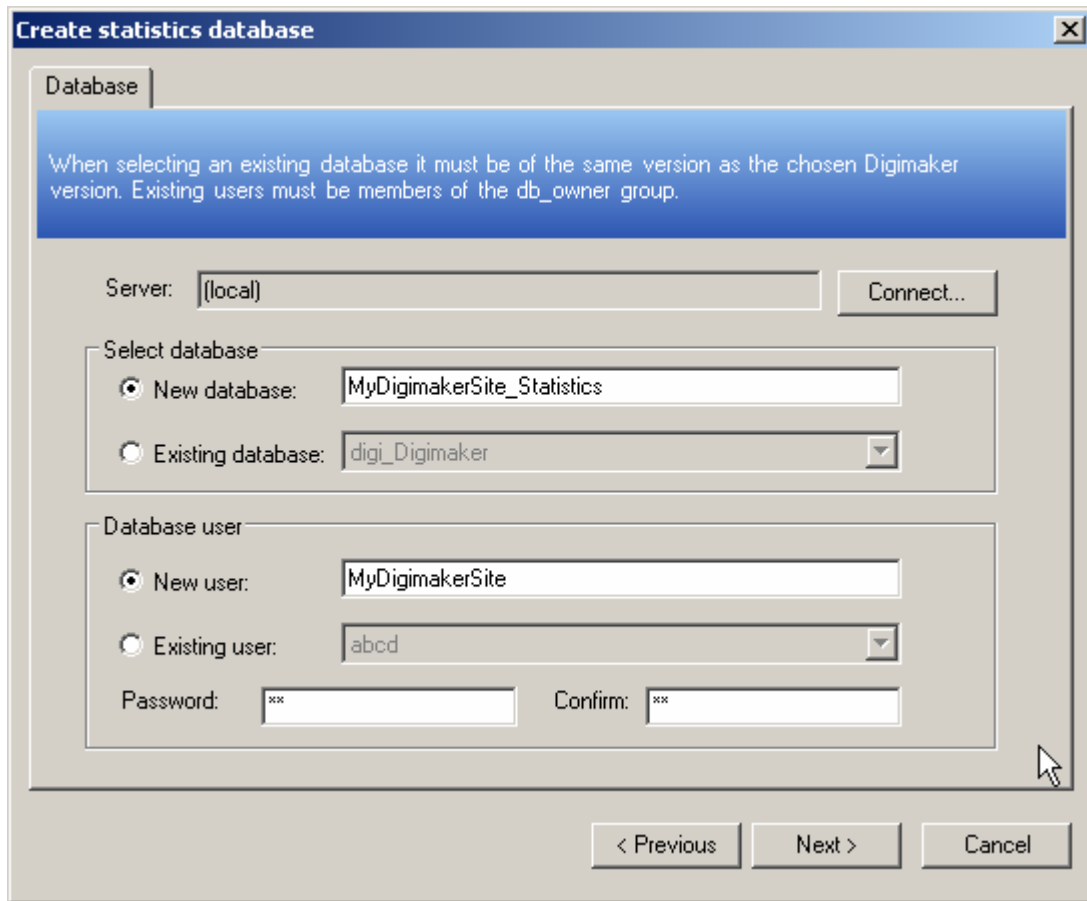


Figure 3-9: Providing name for the database

5. To create a new database, enter a name for the database.
6. Choose **Existing database** and select an appropriate database from the drop-down list if you want to use an existing database.
7. To create a new database user, enter a name for the new database user along with a password and confirm the password.
8. Choose **Existing user**, select an appropriate database user from the drop-down list and enter the valid password when you want to use an existing database user.

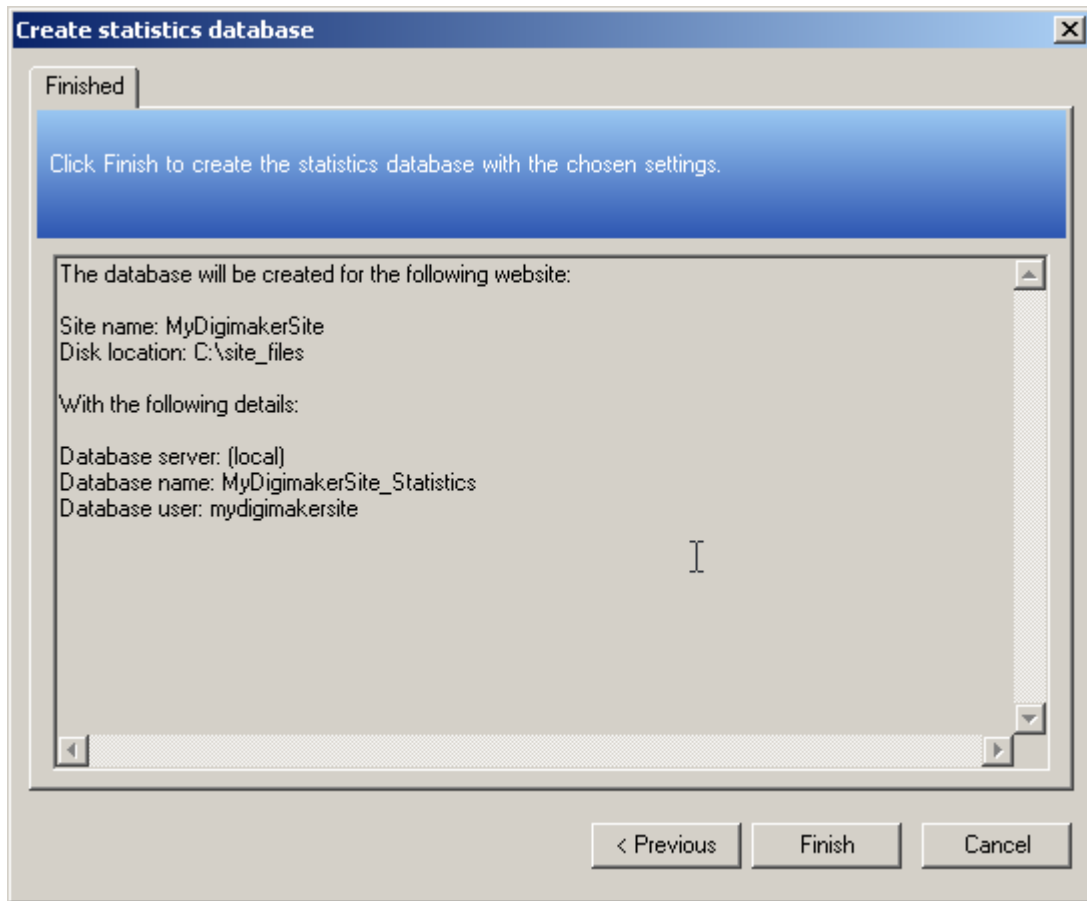


Figure 3-10: Finished Screen

9. Click the **Finish** button to start the process.

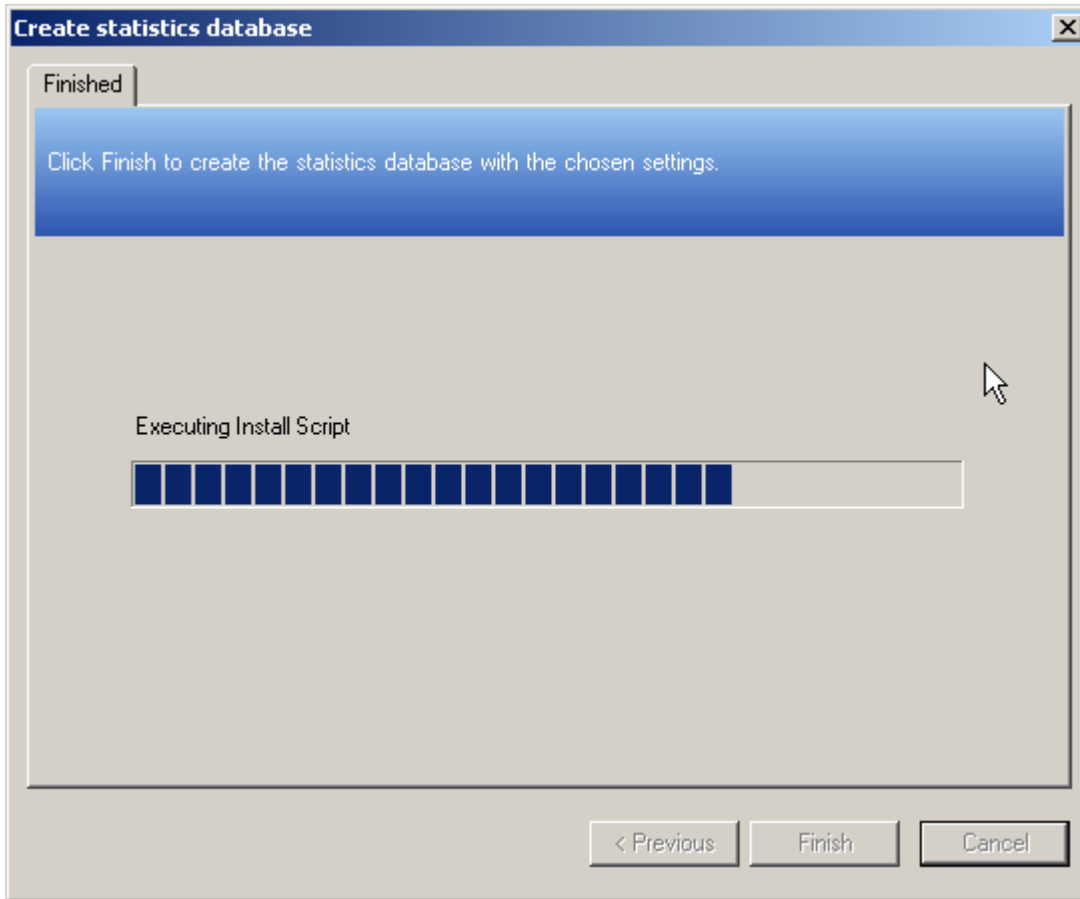


Figure 3-11: Finished Screen

10. Once the process is complete, a confirmation is displayed stating **Statistics database successfully created.**

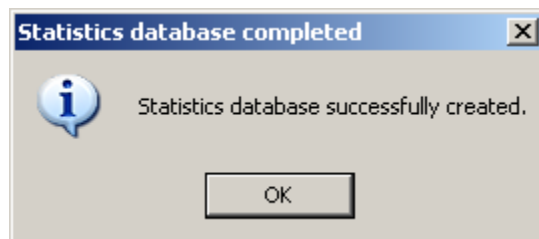


Figure 3-12: Statistics Database

11. Click **OK**.

4. Deleting a Website

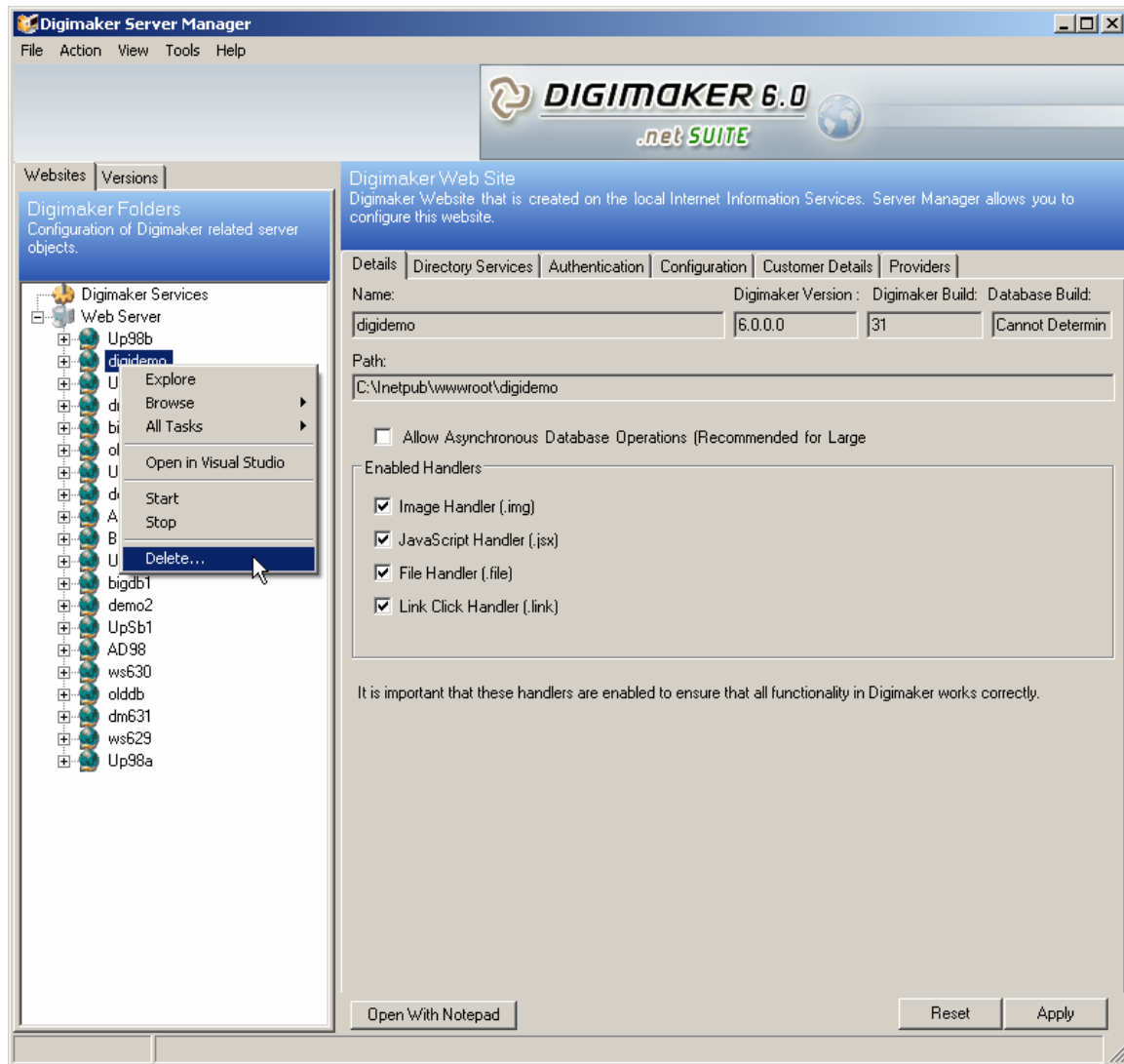


Figure 4-1: Delete...

To delete a website,

1. Right click the website you want to delete in the **Website Tab** and select **Delete Website** from the pop-up menu. This displays the **Delete** dialog box.

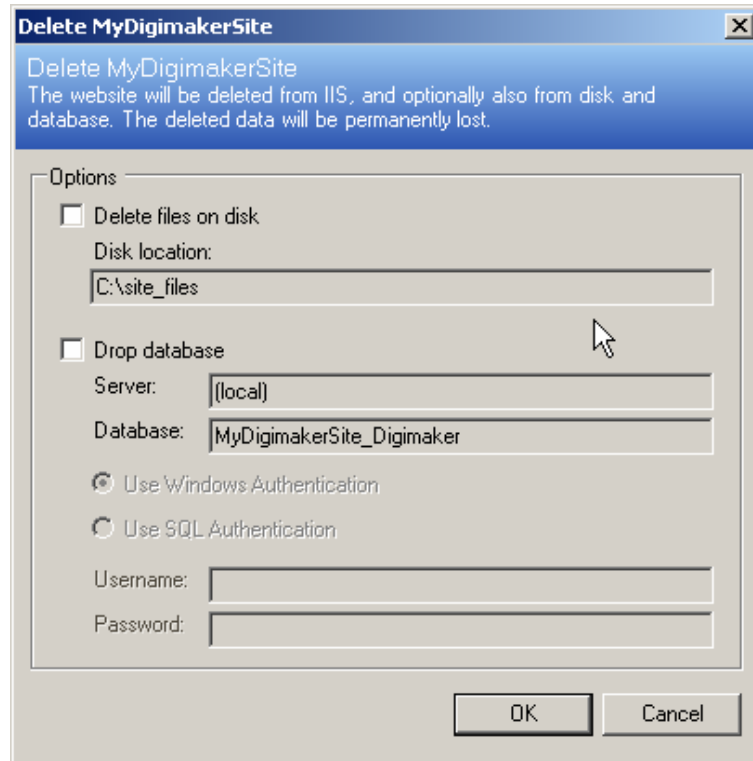


Figure 4-2: Delete Website Dialog box

2. Select the **Delete files from disk** option to permanently delete all website files from the disk. Select the **Drop database** option to delete the website database. If you do not select any option the website will be deleted from Internet Information Server (IIS) only.
3. Click **OK**.

5. Website Administration

You can manage and configure Digimaker websites from the Server Manager.

To manage a site

Select the website you want to manage and configure in the **Website Tab**. The right-hand side of the window shows six tabs: **Details**, **Directory Services**, **Authentication**, **Configuration**, **Customer Details** and **Providers**.

5.1 Website Details

Figure 5-1 shows **Digimaker Server Manager** for a sample website with the **Details Tab** selected.

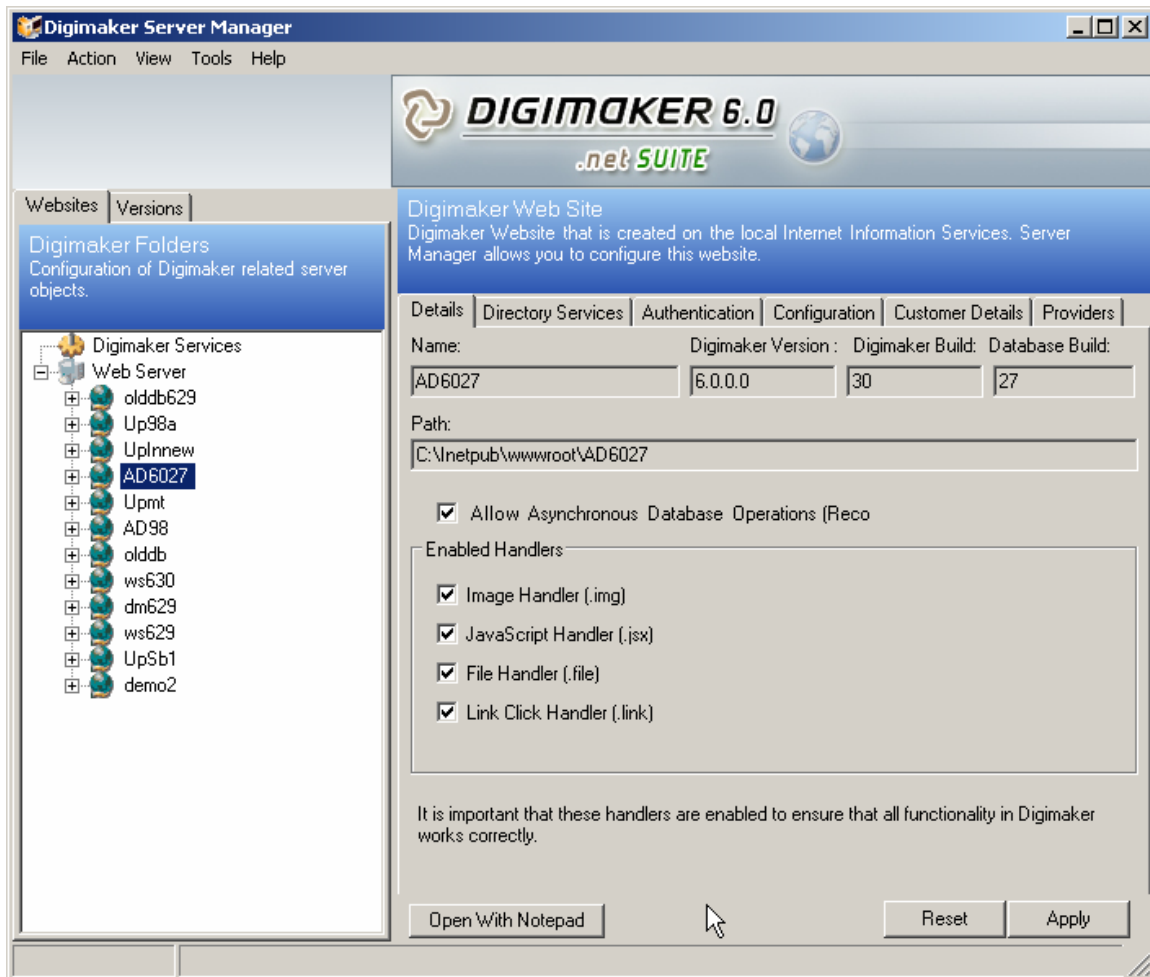


Figure 5-1: Details for a Sample Website

You can disable various handlers for the website when some other software uses the same handlers. However, these handlers need to be enabled for Digimaker to run smoothly.

Allow Asynchronous Database Operations

In case the database of your website is very large and you experience timeouts in the Website Structure sections of the Digimaker Administration Interface, enable this option.

5.2 Digimaker Directory Services

You can modify the existing **Digimaker Directory Services Integration** configuration or add a new configuration in the **Directory Services Tab**.

Digimaker Directory Services Integration replicates the structure of a directory service (such as Microsoft's Active Directory) into Digimaker's corporate structure. It also updates existing objects in Active Directory with information that has changed in Digimaker.

When integrated with Active Directory, the integration also includes authentication using Windows Integrated Security, or simply by using forms authentication which authenticates with Active Directory in the background.

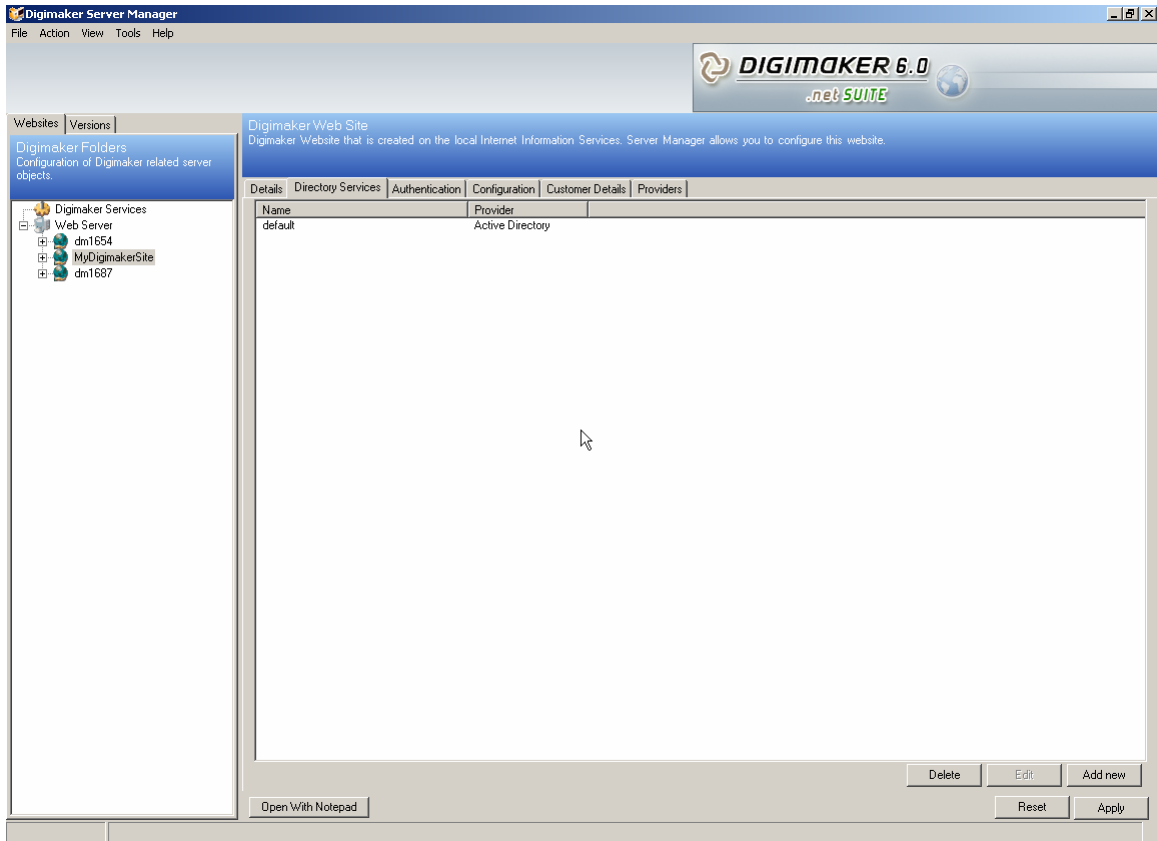


Figure 5-2: Directory Services

5.2.1 Configuring Directory Services Integration

The configuration of the Directory Services Integration is done through **Digimaker Server Manager** at site level.

To start configuration,

1. Open **Digimaker Server Manager**.
2. Select the website you wish to set up for Directory Services Integration and select the **Directory Services Tab** on the pane to the right.

The Directory Services Tab

The **Directory services Tab** consists of a list of preconfigured integrations. This list contains the friendly name for the integration and the provider. This is nothing but the directory service for which the integration works.

By right clicking the integration list, you can:

- Configure selected integration
- Add new integration
- Delete an integration
- Copy (Duplicate) an integration
- Refresh integration list

Double-clicking on an integration item opens the **Integration Configuration Window**.

The Integration Configuration Window

This window is used to change all settings related to an integration. The window is divided into three tabs:

- **General:** Configure all general settings related to the integration.
- **Organizational Units:** Configure mappings for fields available for organizational unit objects.
- **Users:** Configure mappings for fields available for user objects.

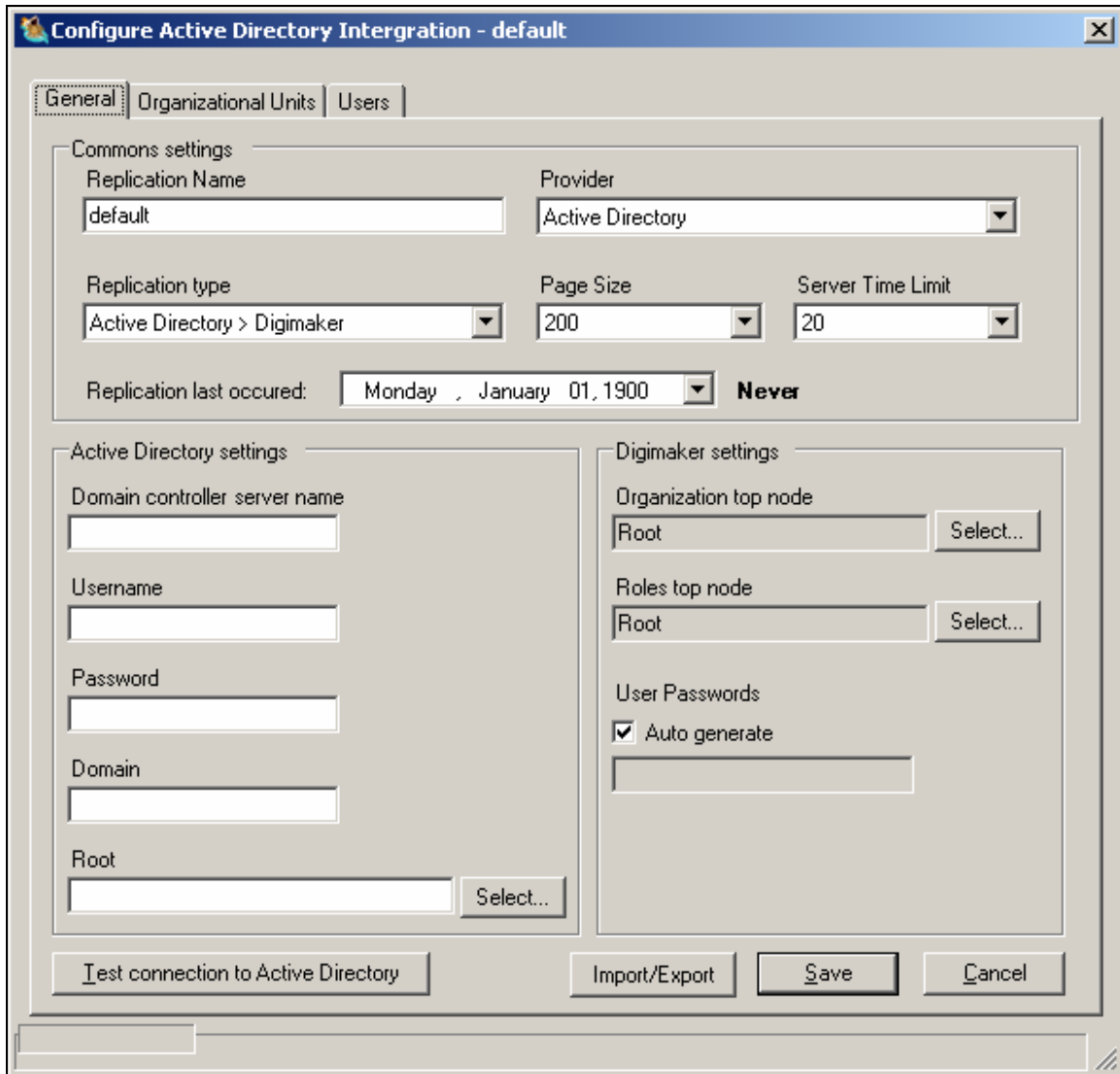


Figure 5-3: Integration Configuration Window with General Tab Selected

General

This tab is used to configure the general settings related to the integration, such as name of the integration, connection settings and security group/organizational unit top nodes.

Common Settings

- *Replication name*: A friendly name for the integration which is only used for recognizing this instance by the user.
- *Provider*: The name of the provider for this instance. For example; Active Directory.
- *Replication Type*: The replication type; which way data should be updated. The valid types are: - Directory Services > Digimaker - Digimaker > Directory Services - Both ways (Digimaker is master) - Both ways (Directory Services is master)

- *Page Size*: This specifies how many records that are read at once from directory services.
- *Server Time Limit*: This specifies how long to wait for connection to directory services.
- *Replication Last Occurred*: Prints the date of the last successful replication.

Active Directory Settings

- *Domain controller server name*: This is the name of the domain controller to connect to. Example: TESTSRV
- *Username*: This is the username of the user used to authenticate with the directory service when replicating data. This user should have administrative privileges in the directory. Example: Administrator
- *Password*: This is the password of the above user. Example: password. Both “Username” and “Password” is encrypted when saved. To test the Active Directory Settings, the user can click “*Test connection to Active Directory*” button.
- *Domain*: This is the NETBIOS domain name. Example: TESTING
- *Root*: This is the LDAP path to the organizational unit used as top node for replication. Example: ou=Test Users, dc=testing, dc=mydomain, dc=com

Digimaker settings

- *Organization top node*: The node which to import the directory services structure into. The node is selected by clicking the “*Select...*” button, and then choosing the appropriate top node – either an existing node, or “Root”.
- *Roles top node*: The node which to import the directory services security groups structure into. The node is selected by clicking the “*Select...*” button, and then choosing the appropriate top node – either an existing node, or “Root”.
- *User Passwords*: When user objects are imported into Digimaker, the user can choose either create a random password for each user (Auto generate), or to create the same password for all users. **For security it is strongly recommended that you create a random password for each user.** When using authentication with Active Directory, the password in Digimaker is not used – only the username/password from Active Directory is used.

Organizational Units

The Organizational Units page is used to define mappings between Organizational Unit fields in the directory service and Digimaker. There are a number of required fields which cannot be edited. The rest of the fields can be edited and removed from replication.

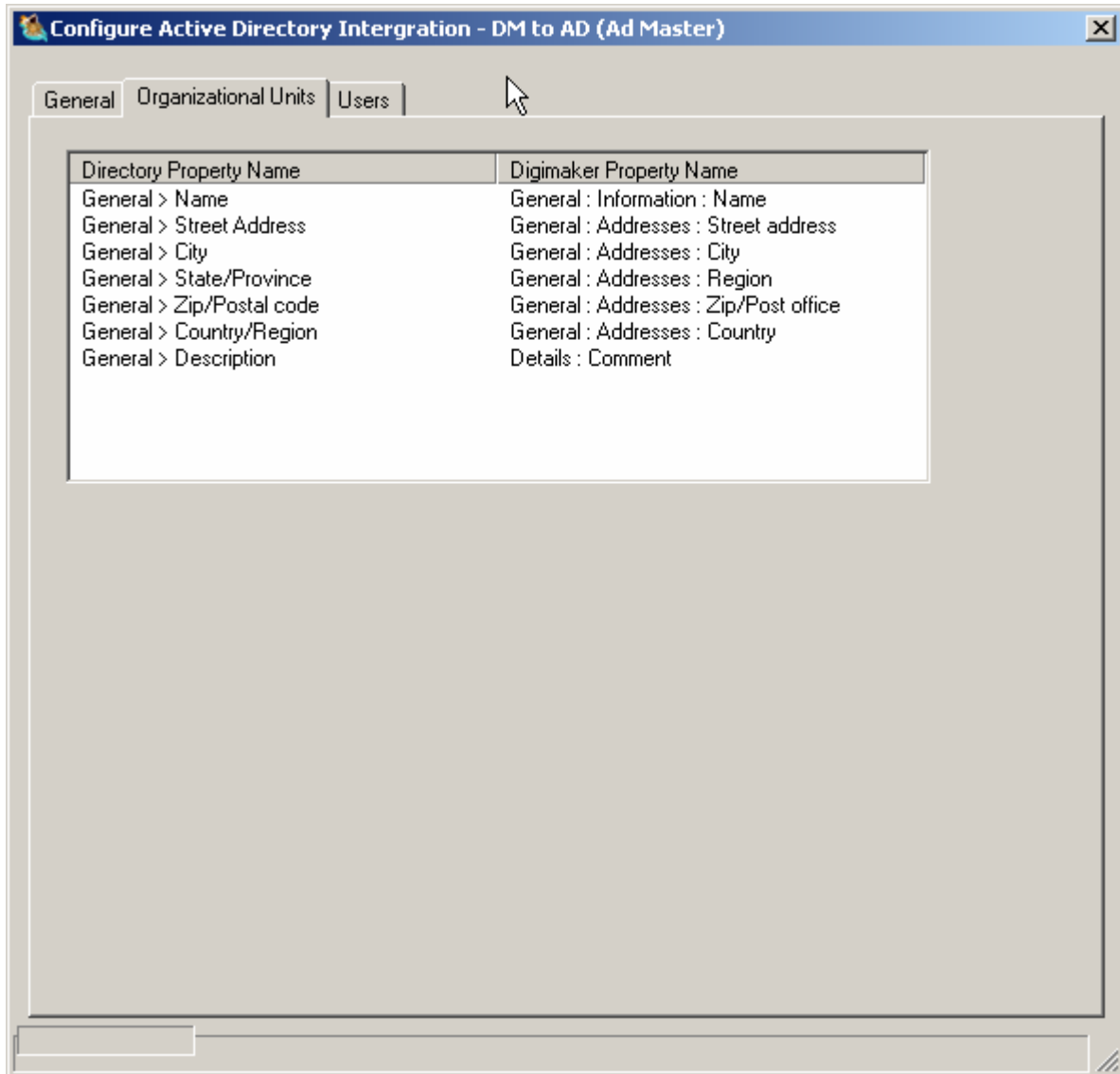


Figure 5-4: Organizational Units Tab

Table: Mandatory mappings – Cannot be edited

Directory Property Name	Digimaker Property Name
General > Name	General : Information : Name
General > Street Address	General : Addresses : Street Address
General > City	General : Addresses : City
General > State/Province	General : Addresses : Region
General > Zip/Postal code	General : Addresses : Zip/Post office
General > Country/Region	General : Addresses : Country

To remove mapping for a field

1. Right-click the field to remove.
2. Click “Delete mapping” in the context menu.

To add a new mapping

1. Right-click in the mappings list.
2. A new list of fields available for mapping is visible. Choose which field(s) to add, and click the “Add” button.

Users Tab

The Users page is used to define mappings between Users fields in the directory service, and Digimaker. There are a number of required fields, which cannot be edited. The rest of the fields can be edited and removed from replication.

Table: Mandatory mappings – cannot be edited:

Directory Property Name	Digimaker Property Name
General > First name	General : Person details : First name
General > Last name	General : Person details : Surname
General > Display name	General : Person details : Display Name
General > E-mail	General : Person details : E-Mail
Address > Street	General : Addresses : Street Address (Type: Street)
Address > P.O.Box	General : Addresses : Street Address (Type: Postal)
Address > City	General : Addresses : City
Address > State/Province	General : Addresses : Region
Address > Zip/Postal code	General : Addresses : Zip/Post office
Address > Country/Region	General : Addresses : Country
Account > User logon name	General : Credentials : Logon name*

To remove mapping for a field:

1. Right-click the field you want to remove.
2. Click **Delete mapping** in the context menu.

To add a new mapping:

1. Right-click in the mappings list.
2. A new list of fields available for mapping is visible. Choose which field(s) to add, and click the **Add** button.

5.2.2 Manual Import/Export

After testing connection to the directory service and ensuring that all properties are properly set up, you can proceed to do a manual import of entries from the directory service.

Note: Remember to have an up-to-date backup of your Digimaker database before performing this procedure.



Figure 5-5: Import/Export Data

To start an import or export of data, simply edit an integration instance from the **Directory Services** tab of the website in Server Manager, by double-clicking on the integration, and click the **Import/Export** button in the **General** tab of the **Integration Configuration** window. The window shown in Figure 5-5 opens.

Import

In the window shown in Figure 5-5, click the **Import to Digimaker** button to start importing data from the directory service to Digimaker. A progress bar will show the progress of the import. First-time import of data may take several minutes, so please be patient.

Export

Click the **Export to Directory Service** button to start exporting data from Digimaker to the directory service. A progress bar will show the progress of the export. An export should only occur after an import has occurred in order to map object properly. If, however an export is done before the import, this won't harm your Active Directory. It is recommend to always have an up-to-date backup of Active Directory available before performing a manual export.

Testing the Database Connection

To test the database connection, click **Test Connection to Active Directory** at the bottom left of the **Configure Active Directory Integration** screen.

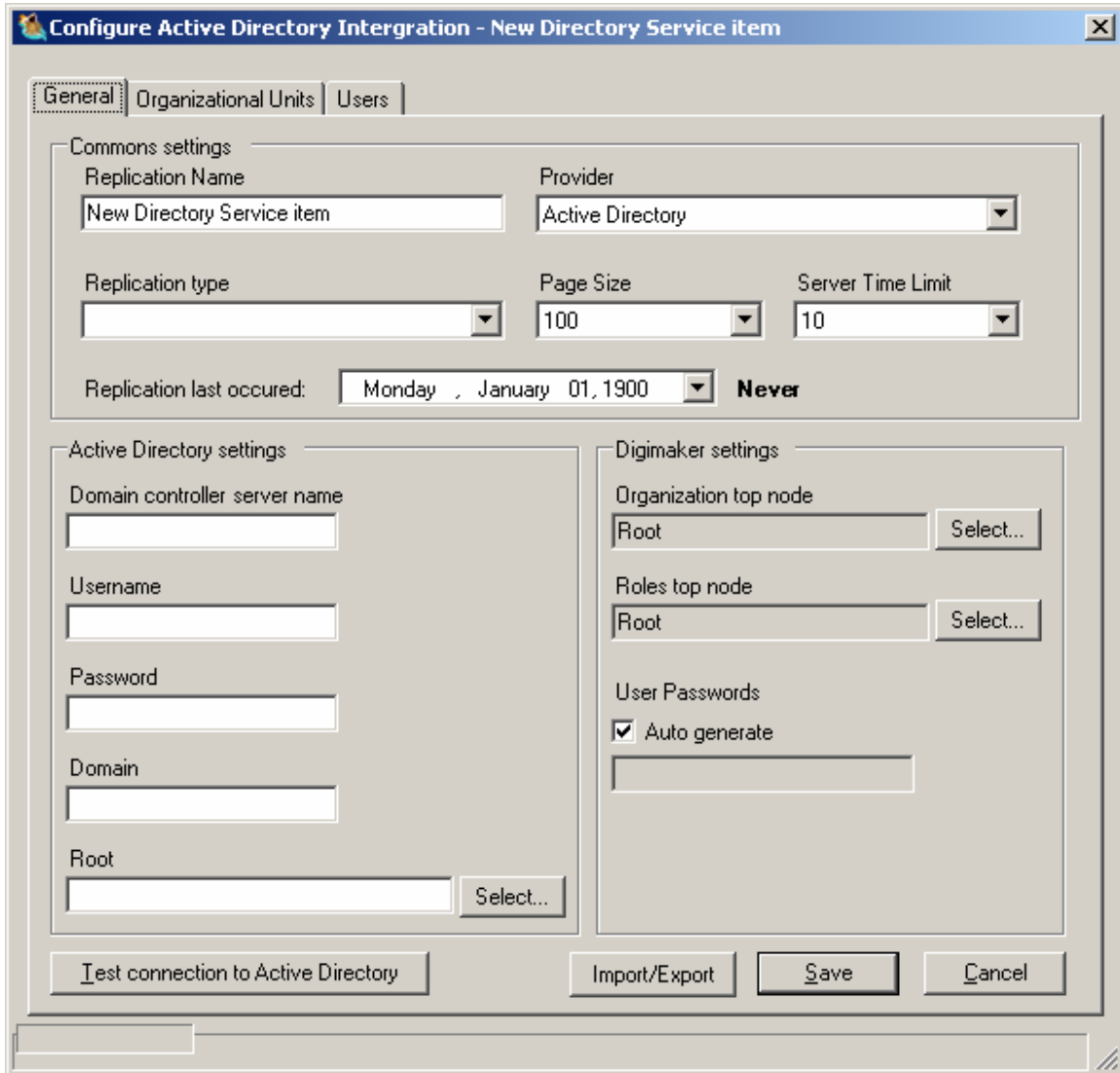


Figure 5-6: Test connection to Active Directory

To view database settings, click the plus sign to expand the node. This will show two databases and six folders for the website. Click on the Statistics item. The screen changes to the one shown in Figure 5-7.

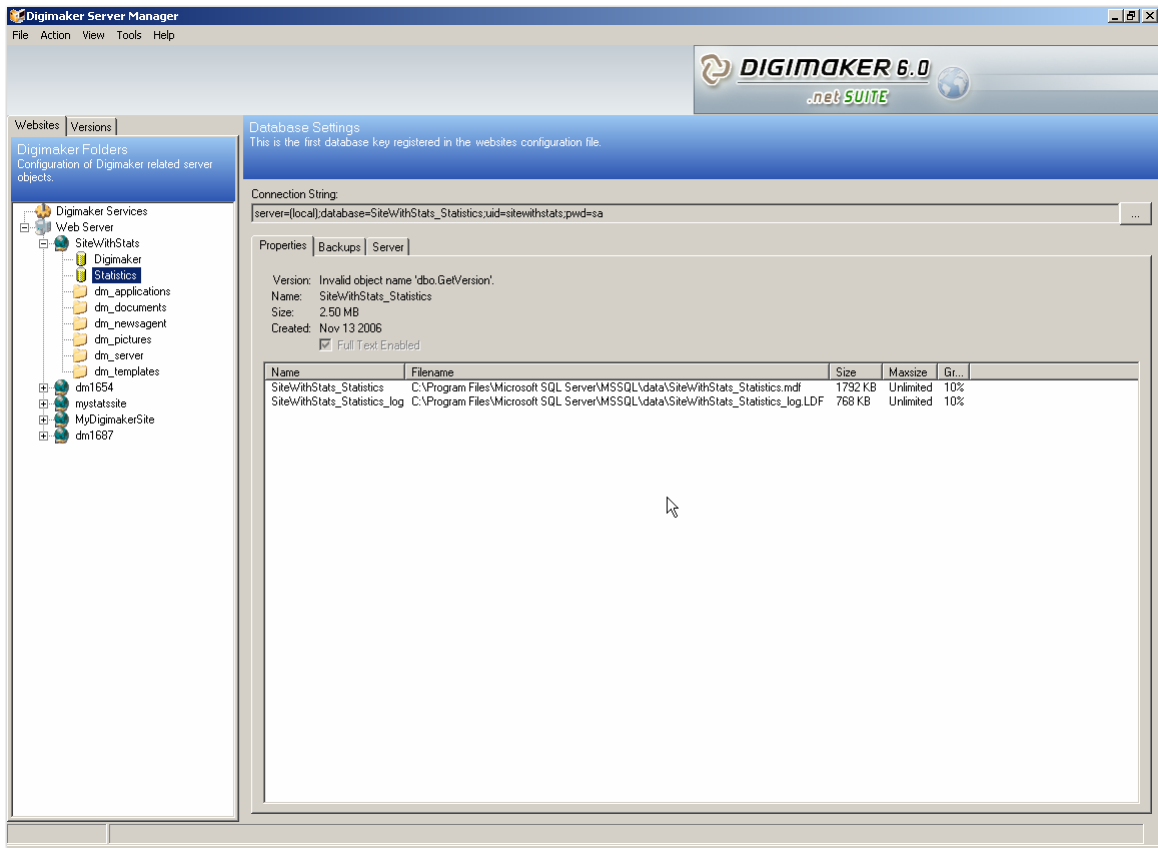


Figure 5-7: View Database

5.3 Authentication

After testing connection to the directory service, and checking that all properties are properly set up, you should do a manual import of entries from the directory service.

Note: Remember to have an up-to-date backup of your Digimaker database before performing this procedure.

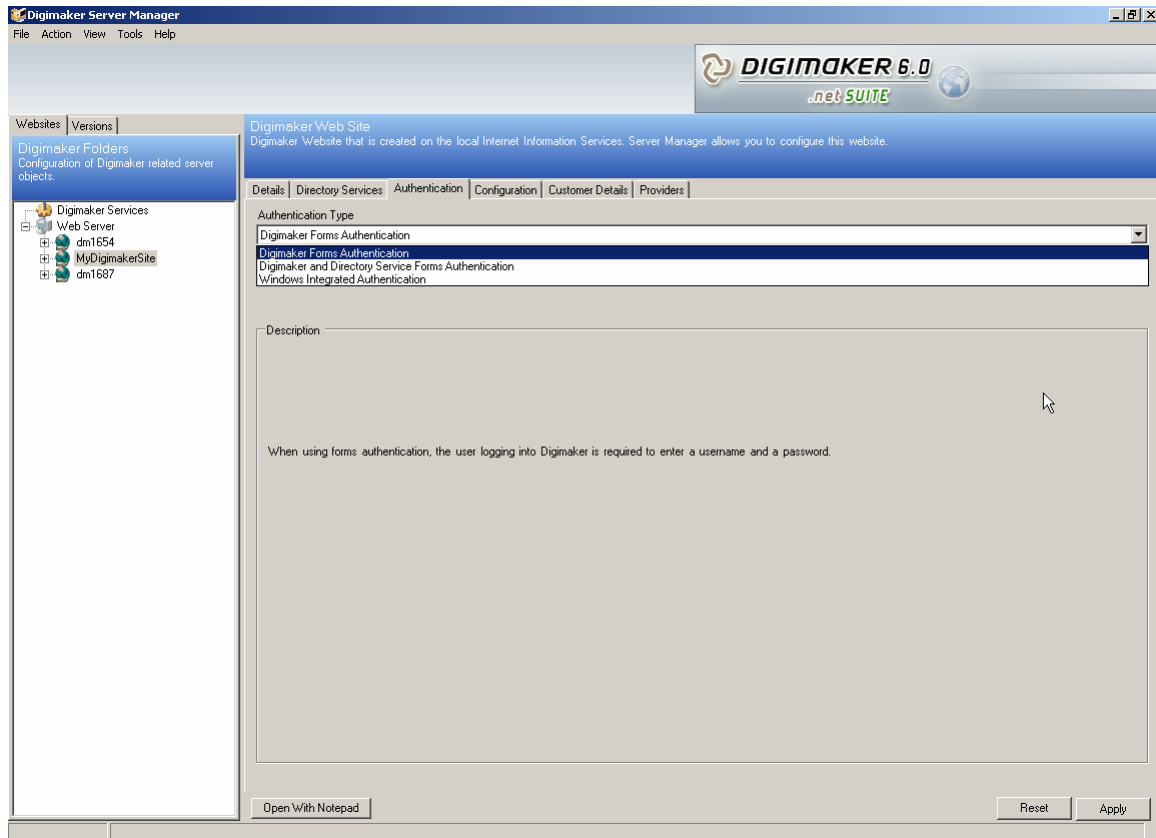


Figure 5-7: The Authentication Tab

5.3.1 Digimaker Forms Authentication

This type of authentication is also referred to as Normal Authentication or Forms Authentication. The authentication occurs using forms. The user is authenticated by entering a username and password for Digimaker. These credentials are then authenticated through Digimaker.

5.3.2 Digimaker and Directory Service Forms Authentication

This type of authentication is very similar to Digimaker Forms Authentication where the user enters a username and password. It can be used for both authenticating with Digimaker, or the directory service. In the log-in box for Digimaker, the user can select to authenticate with Digimaker, or by the domain name selected in a drop-down list. This login box is somewhat similar to the Windows log-in box display when logging onto a Windows computer. If the user selects a domain to authenticate with, the user should supply his or hers Active Directory credentials. Digimaker will then use the directory service for authentication.

5.3.3 Windows Integrated Authentication

The Windows Integrated Authentication is a seamless form of authentication as it, uses the credentials already established when the user logs on to a domain. This authentication requires that the web server is in the same domain as the user or in a trusted domain.

5.4 Website Directories

Figure 5-8 shows the directories within a website. The details of each directory are displayed when you click the directory name.

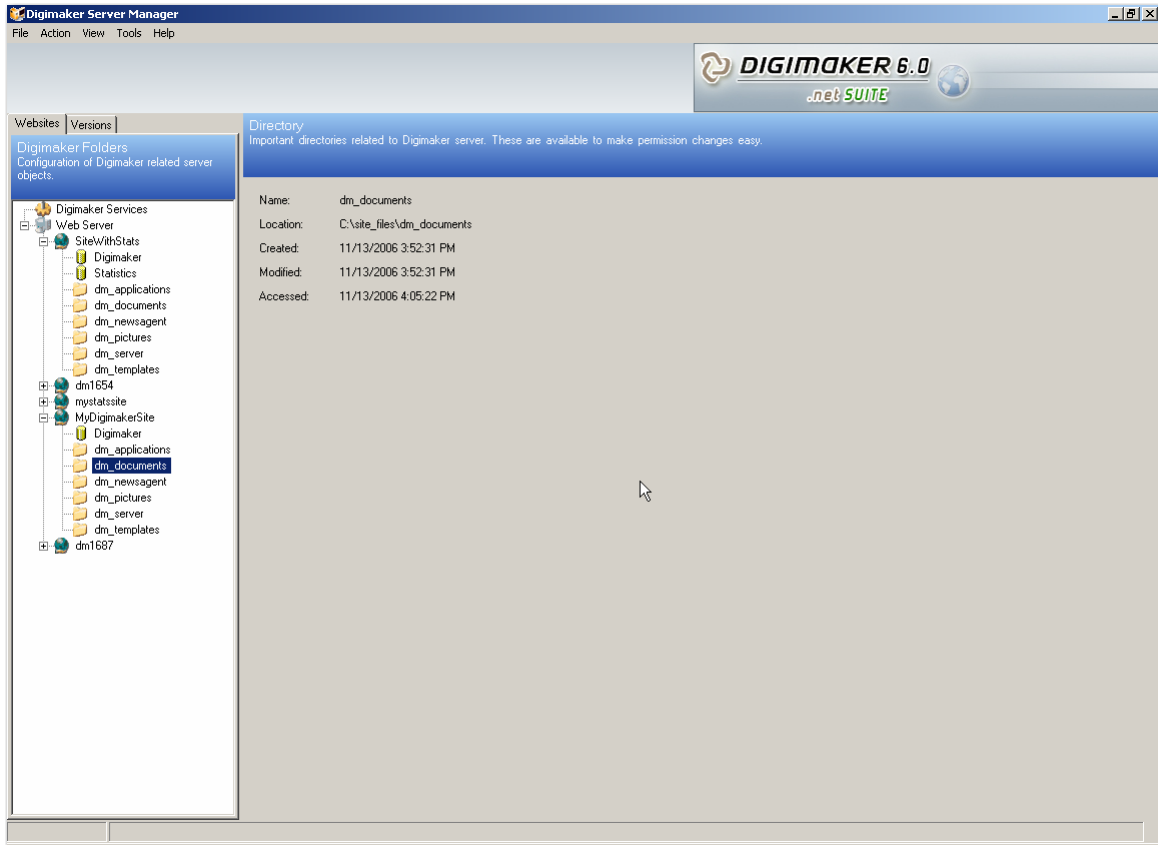


Figure 5-8: Website Directories

5.5 Configuration

The Configuration tab shows the Digimaker Configuration to which you can make changes as required. **Configuring Digimaker** is a lot easier now from the intuitive UI within the server manager. The user can **configure settings** for Campaign such as Default Mail server settings/Bounce back mail server settings, ArticleCheckInCheckOut(Enabled/Disabled) , Friendly url(Enabled/Disabled), Providers and so on.

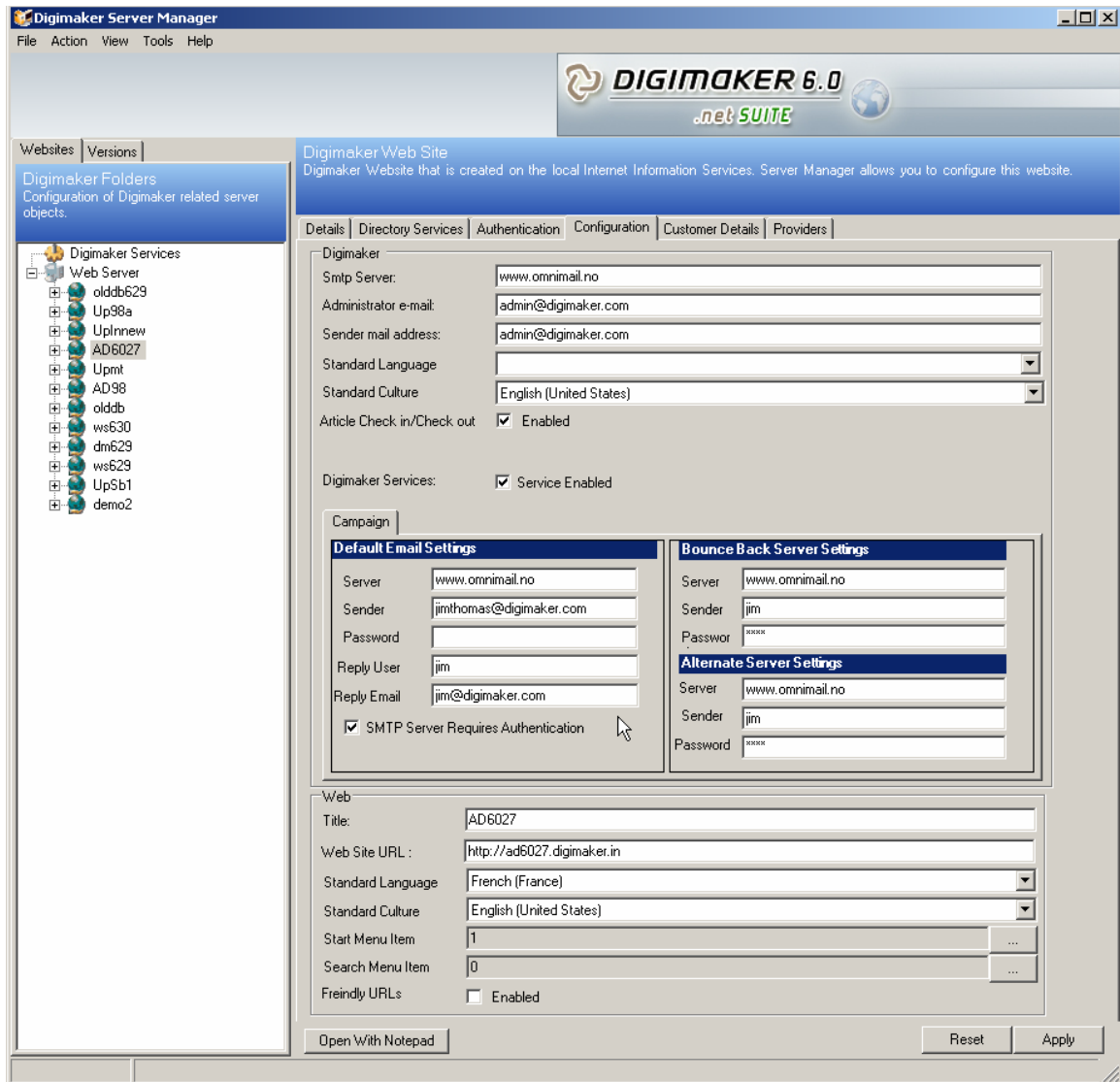


Figure 5-9: Website Configuration

5.5.1 Friendly URL

Dynamic CMS driven websites tend to generate the links to different pages based on IDs found in a database. Digimaker does the same thing. From version 6 of Digimaker the dynamically generated URLs can be as we call it “Friendly”, that is: easier to read for the end user and more acceptable for search engines such as Google.

Before and now

Before a typical link on your Digimaker website would be:

<http://www.myweb.com/mytemplate.aspx?m=354&amid=6632>

With Friendly URLs this could translate into: <http://www.myweb.com/news/latestItem.html>

Controlling the naming of your friendly URL

Let’s start with a breadcrumb example reflecting the menu item structure inside Digimaker, and say it looks like this:

Home > News > Sports > Football

The Friendly URL could with the digimaker.config setting above look like this:

<http://www.myweb.com/football.html> or <http://www.myweb.com/20.html>

If a text (like “football”) or number should be used is based on the “Alias” entered for the menu item, unless an alias is provided the id will be used. Note! The URL is still search engine friendly even though the URL uses numbers.

If the setting “`ShortPath`” is changed to “`false`” the friendly URL could be like this:

<http://www.myweb.com/home/5/17/football.html> having the entire bread crumb path in the URL.

For the developer -Additional Querystring parameters

You as the developer decides if your extra querystring parameters should be supplied to the functions that support it or not, if not you simply append “?`<parameter>=<value>`” to the functions return value. Passing as a parameter is the recommended, in case the format of friendly URL changes in the future.

A friendly URL with additional query string parameter(s) will look like this:

<http://www.myweb.com/news/latestItem.html?newParam=here>

For helper functions on creating links the same as before are used, found in:

`SiteBuilder.WebControls.ContentToolkit.Url`

Activation / Setup

In your digimaker.config file there is a collection named `UrlRewrite`, you will find this in the `Web` section.

Here is what it typically looks like:

```
<collection name="UrlRewrite">
  <add key="Enabled" value="true" />
  <add key="ShortPath" value="true" />
  <add key="RemotingServerAddresses" value="127.0.0.1" />
  <add key="RemotingPort" value="8060" />
  <add key="RemotingServiceName" value="DigimakerUrlHostManager" />
</collection>
```

To enable or disable the functionality, simply change the value for “Enabled” to either `false` or `true`. A value `true` will enable friendly URLs on your site.

How it is all maintained

For every request that is “Friendly” the URL is parsed and rewritten on the context to be “normal” while the page is processed. As the friendly URL will hold the alias or the id of menu item to access we need to look up the id and/or the template for specified menu item. Instead of querying the database each time we keep these values in lists updated upon changes within Digimaker by using “.Net remoting”, that is why the `UrlRewrite` section holds two keys `RemotingPort` and `RemotingServiceName`, the last remoting value `RemotingServerAddresses`, is for load balanced environments where more than one front end server should be updated with new data when a menu items info is changed.

When the application starts it registers a remoting server for updating the lists with menu item template information.

Digimaker will call this service and update the lists as the user changes a menu items alias or template, or changes a templates filename.

5.6 Customer Details

The **Customer Details** tab displays the details of the customer such as the name and the unique identifier, GUID for the customer. The GUID/name cannot be edited once statistics is installed for the site.

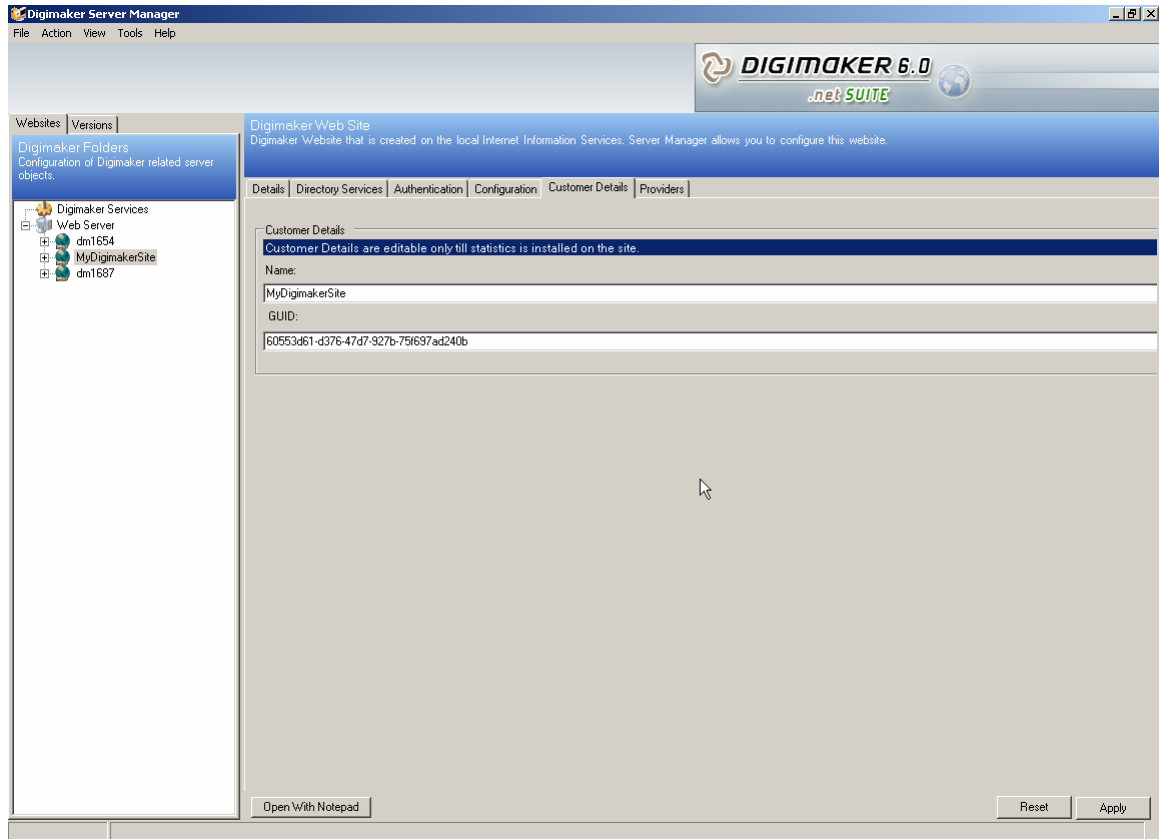


Figure 5-10: Customer Details

5.7 Website database backup and restore

To view the properties of the database used by your site, in the **Website Tab** click on Digimaker by expanding your web site node. This displays the **Properties Tab**.

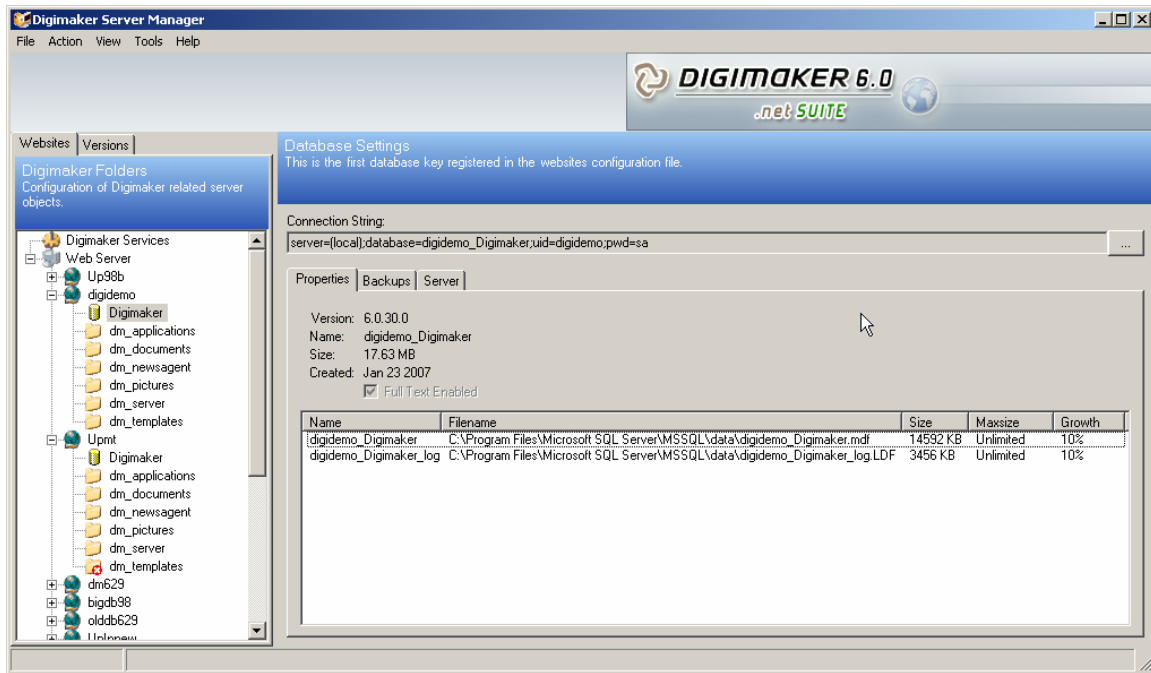


Figure 1-Error! No text of specified style in document.-1: Database Properties Tab

To backup your Digimaker 6.0 web site database,

1. In the **Web Server node**, right click on the web site name for which you want to create a database backup.

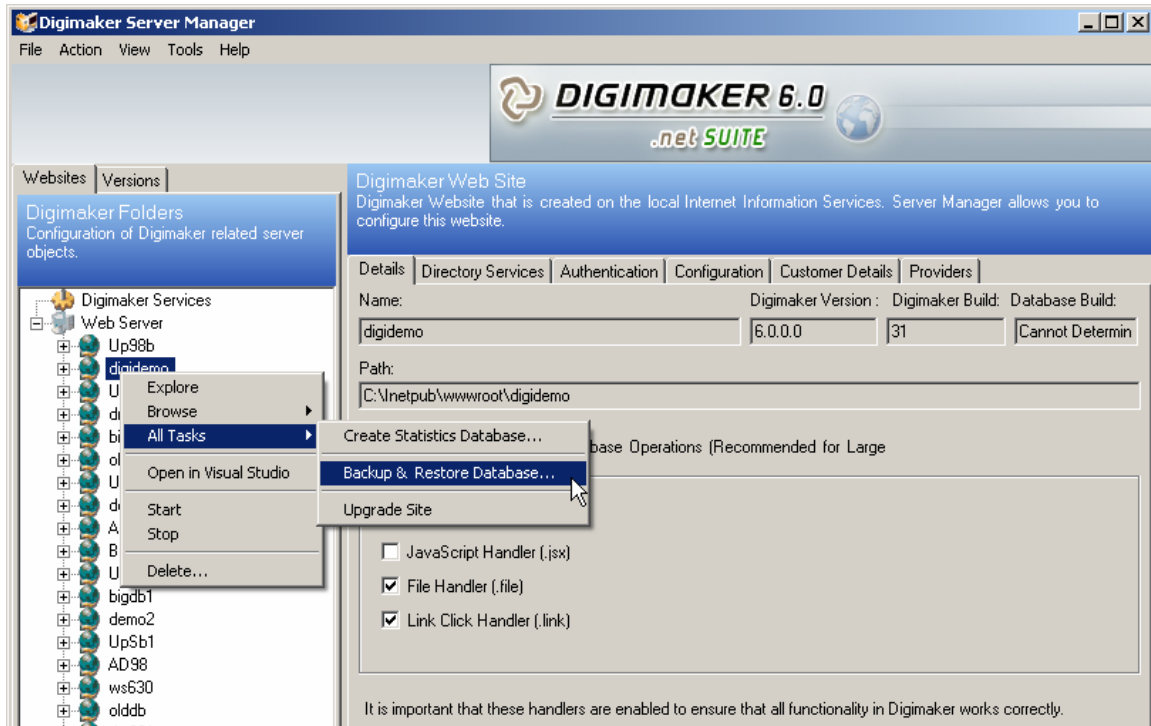


Figure 1-Error! No text of specified style in document.-2: Backup and Restore Database...

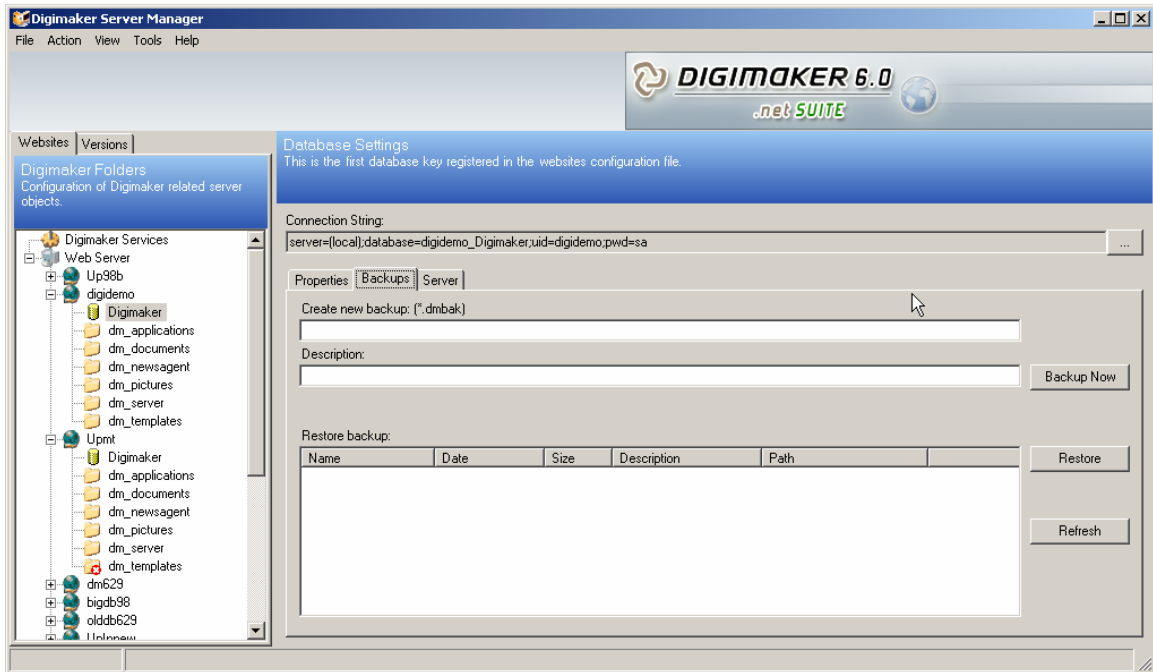


Figure 1-Error! No text of specified style in document.-3: Backups Tab

2. In the **Create New backup** field enter a name for the database backup file.
3. In the **Description** field, enter a short description for this file.
4. Click **Backup Now**, this starts the database backup process.

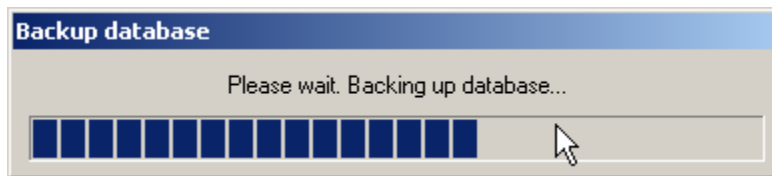


Figure 1-Error! No text of specified style in document.-4: Database backup in progress

5. To restore a website database, select the file from which you want to restore and click Restore, this starts the database restore process.

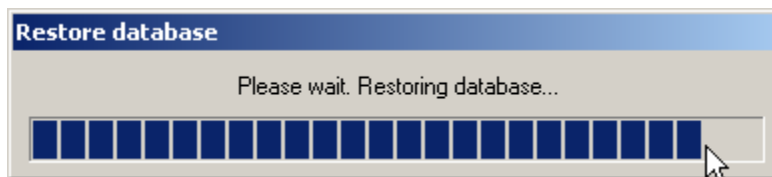


Figure 1-5: Database restore in progress

6. Providers

Providers are a class with a well-known interface that is implemented to meet the needs of the sub-system. The provider model defines an easy plug-and-play architecture. You can use custom providers or write your own providers and use them without rewriting and recompiling the entire solution.

Digimaker 6.0 implements the Provider Model Architecture in the following modules:

Table: Digimaker's Provider Model Implementation

Function	Provider
Membership	DigimakerMembershipProvider
Roles	DigimakerRoleProvider
Permission	DigimakerPermissionProvider
Profile	DigimakerProfileProvider

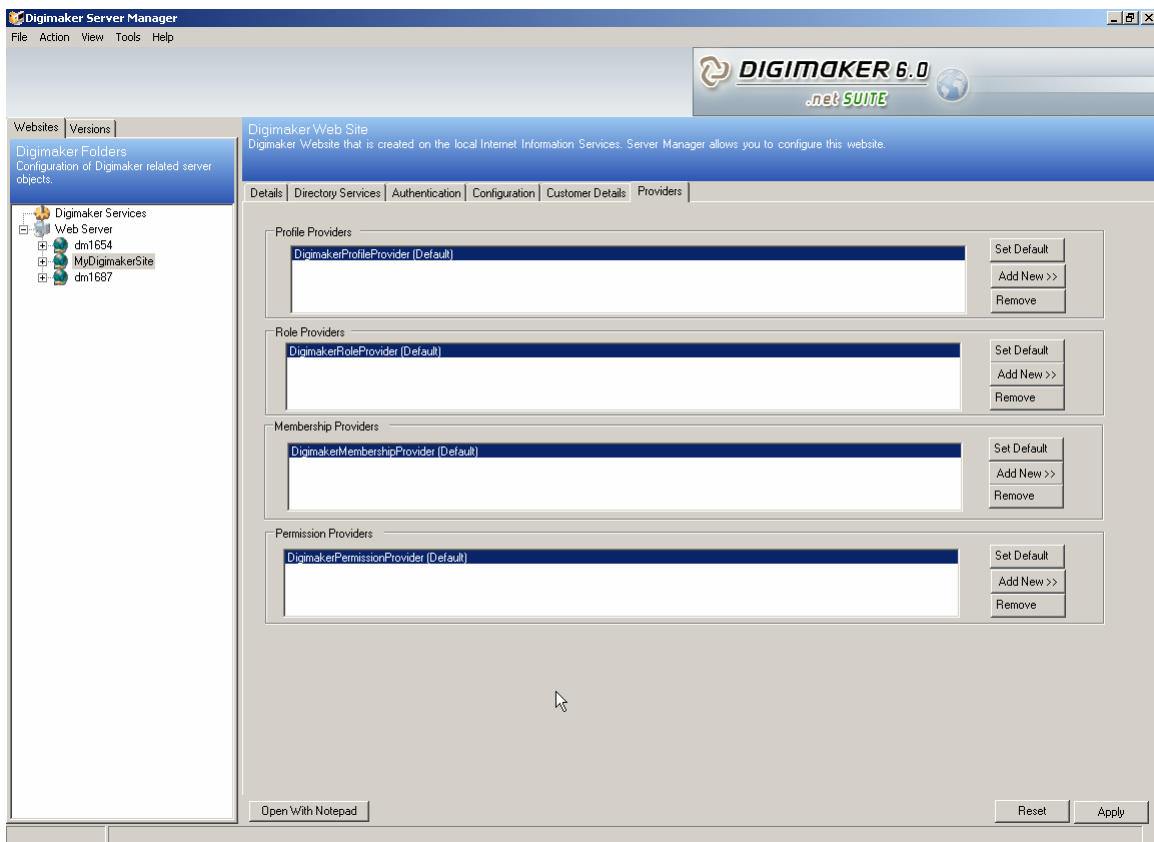


Figure 6-1: Providers

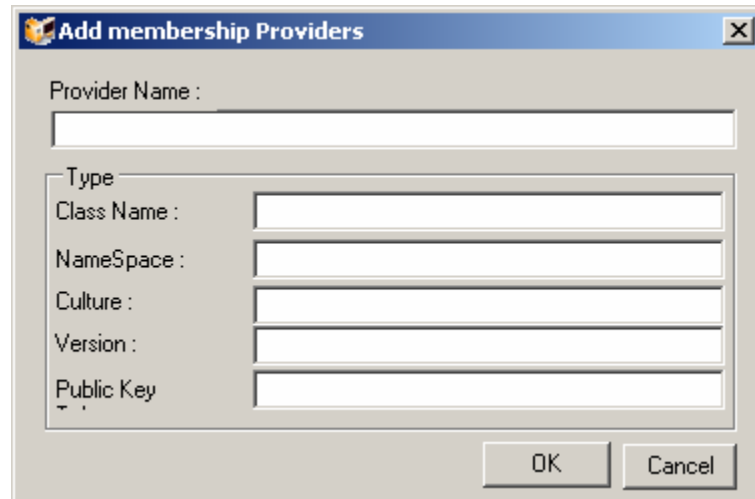
6.1 Membership Provider:

The fundamental job of a membership provider is to interface with data sources containing data regarding a site's registered users, and to provide methods for creating users, deleting users, verifying login credentials, changing passwords, and so on.

You can use your own MembershipProvider instead of the default DigimakerMembershipProvider.

To change the MembershipProvider :

1. Go to **Providers Tab**.
2. Click on **Add New** button under **Membership Providers Section**, this displays the **Add membership Providers dialog**.



3. Provide Name and Type which involves *Class, DLL you use, Version, Culture and Public Key Token* and Click **OK**.

After you have configured your **MembershipProvider**, you can view Provider Name displayed under Membership Provider Section.



Figure 6-2: Membership Providers

You can also Add/Configure your provider through Active Directory (AD) configuration. It requires the login credentials and your Server Name settings as described before.

To Add/Configure your provider through Active Directory (AD) configuration:

1. Once you are done with AD save your configuration settings and then move on to “Authentication Module” to Initiate Directory service.
2. Change your Authentication settings from “Digimaker Forms Authentication” to “Digimaker and Directory Service Authentication” and click **Apply**.

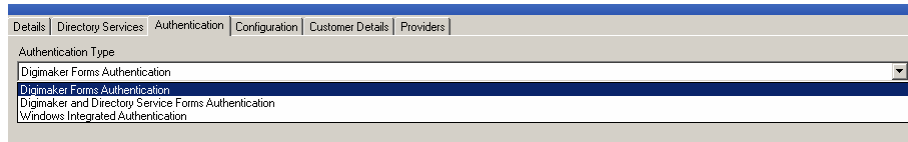


Figure 6-3: Providers

In digimaker.config file you can view encrypted entries of your AD configuration.

```
<Units>
  <DirectoryServer>
    <ServerName>10.29.6.10</ServerName>
    <LDAPPath>
    </LDAPPath>
    <DomainName>Oslo</DomainName>
    <UserName>Rkos4lyi+9A=</UserName>
    <Password>MDRI/dG9Tgsbj+s+kbYZqeg==</Password>
    <ADProviderName>ADosloMembershipProvider</ADProviderName>
  </DirectoryServer>
  <DigimakerServer>
    <OrganizationUnitRoot ID="0" Name="Root" />
    <RolesRoot ID="0" Name="Root" />
    <UserPassword>
    </UserPassword>
  </DigimakerServer>
</Units>
```

Figure 6-4: Providers

In Provider Module, you should be able to see New MembershipProvider under “MembershipProvider” Section.

To set it as the Default provider choose your **MembershipProvider** and click **Set as Default** button.

6.2 Profile Provider

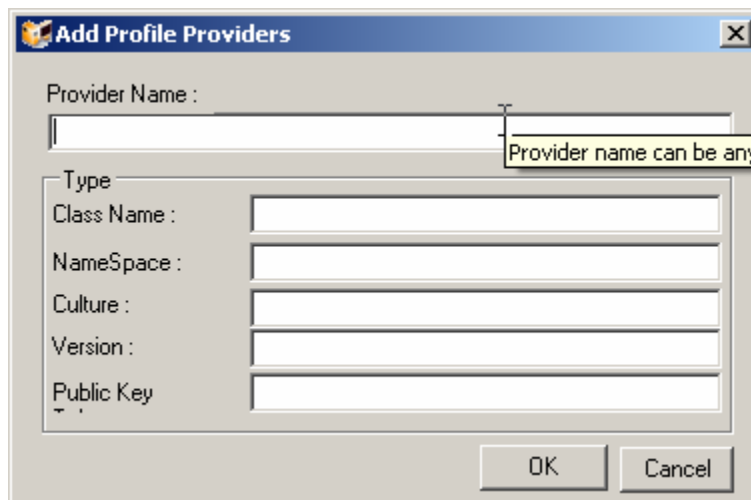
In many applications, you want to store and use information that is unique to a user. When a user visits your site, you can use the information you have stored to present the user with a personalized version of your Web application. Personalizing an application requires a number of elements: you must store the information using a unique user identifier, be able to recognize users when they visit again, and then fetch the user information as needed.

The **DigimakerProfileProvider** associates information with an individual user and stores the information in a persistent format within the Digimaker database and allows you to manage user information without requiring you to create and maintain your own database. In addition, the **DigimakerProfileProvider** works in tandem with the ASP.NET profile feature to make the user information available using strongly typed API that one can access from anywhere in your application. We can save individual profile settings using Profile provider.

You can use your own custom profile provider in Digimaker 6.0

To use your own Profile Provider:

1. Go to **Providers Tab**.
2. Click on **Add New** button under **Profile Providers Section**, this displays the **Add Profile Providers dialog**.



The screenshot shows a dialog box titled "Add Profile Providers". It features a "Provider Name" input field with a tooltip that reads "Provider name can be any". Below this is a "Type" dropdown menu. Underneath the dropdown are five input fields labeled "Class Name", "NameSpace", "Culture", "Version", and "Public Key". At the bottom of the dialog are "OK" and "Cancel" buttons.

3. Enter the Name and Type which involves *Class, DLL you use, Version, Culture* and *Public Key Token* and Click **OK**.

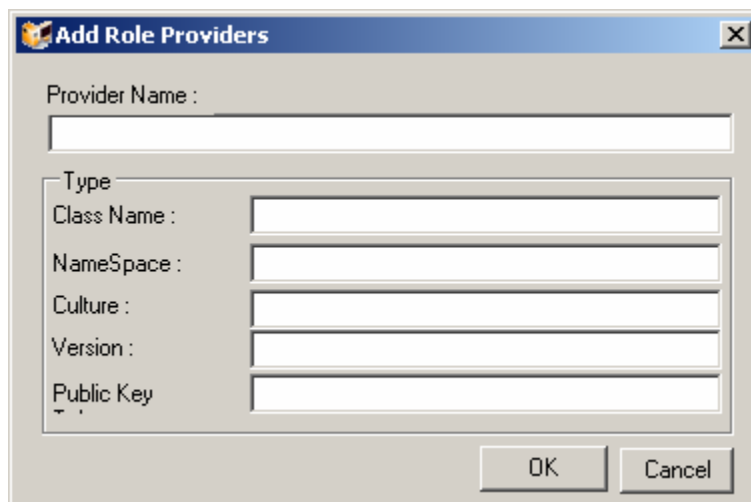
6.3 Role Provider:

The role provider in Digimaker stores and retrieves role information. It essentially deals with authorization and allows you to specify which resources users in your application are allowed to access.

You can use your own Role Provider in Digimaker 6.0 for authorizing a user.

To use your own Role Provider:

1. Go to **Providers Tab**.
2. Click on **Add New** button under **Role Providers Section**, this displays the **Add Role Provider dialog**.



The screenshot shows a dialog box titled "Add Role Providers". It has a standard Windows-style title bar with a close button (X) in the top right corner. The main area of the dialog contains the following fields:

- "Provider Name" with a text input box.
- "Type" with a dropdown menu.
- "Class Name" with a text input box.
- "NameSpace" with a text input box.
- "Culture" with a text input box.
- "Version" with a text input box.
- "Public Key" with a text input box.

At the bottom right of the dialog are two buttons: "OK" and "Cancel".

3. Enter the Name and Type which involves *Class, DLL you use, Version, Culture* and *Public Key Token* and click **OK**.

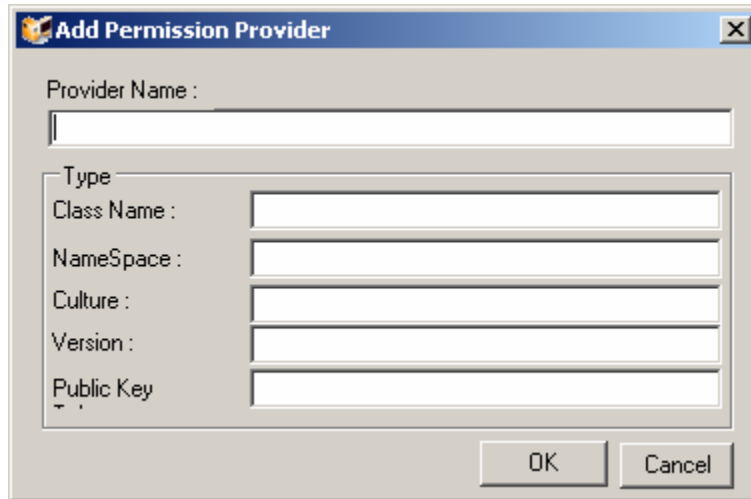
6.4 Permission Provider

Permission provider has been added to Digimaker to manage permissions information.

You can use your own Role Provider in Digimaker 6.0 for authorizing a user.

To use your own Permission Provider:

4. Go to **Providers Tab**.
5. Click on **Add New** button under **Permission Providers Section**, this displays the **Add Permission Provider dialog**.



6. Enter the Name and Type which involves *Class, DLL you use, Version, Culture* and *Public Key Token* and click **OK**.

7. Upgrading a Website

This section helps the user to upgrade Digimaker websites running on previous versions of Digimaker, to the newer versions of Digimaker.

To upgrade a website

1. For upgrading a website to Digimaker 6.0, first convert the Site's solution from earlier version to ASP.NET 2.0 using Visual Studio 2005. For a more detailed explanation of migrating you site from ASP.NET 1.1 to 2.0 see the **Digimaker 6.0 Migration Guide**.
2. Right click the desired website node from the Web Server tree.
3. Select the **All Tasks > Upgrade Site** option from the pop-up menu. This displays the **Digimaker Upgrade Utility** dialog box.

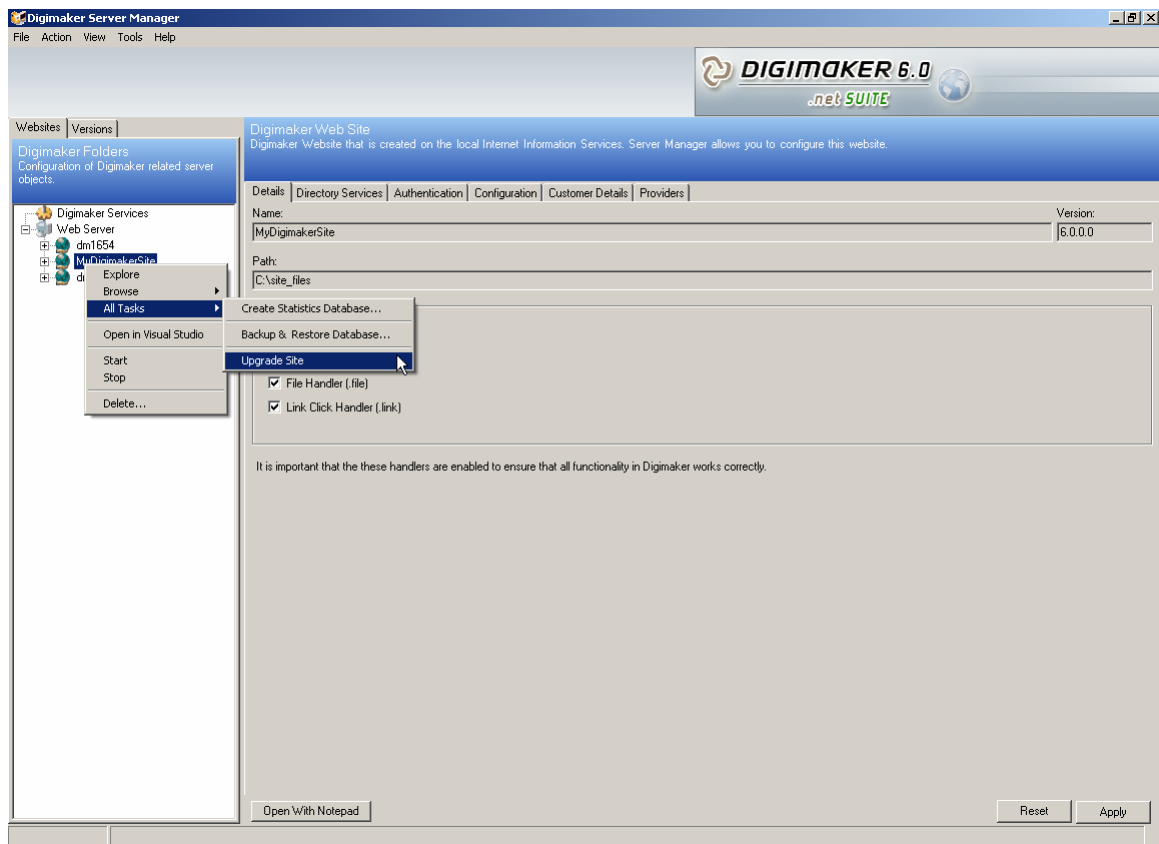


Figure 7-1: Upgrade Site

4. Select the Digimaker version to upgrade the site to.
5. Upgrading can be done in Phases to the target version. Check all the options to do a complete upgrade.
6. Click the **Upgrade Now** button on the lower right-hand side of the dialogue box. Digimaker now updates the files and assemblies to the target version you selected.



Figure 7-2: Upgrading a website

The upgrade process performs the following tasks:

- Assembly versions are modified to the version being upgraded in the web.config file and in the digimaker.config file.
- Appropriate entries are made in the Membership section.
- WebResources section in digimaker.config is modified.
- The site is registered with the appropriate version of ASP.NET within the IIS.
- The database is updated automatically.

8. Quick Start

This part of the manual is a step-by-step guide for setting up directory services integration with Digimaker, and intended for the professional administrator.

1. Start **Digimaker Server Manager**.
2. Select the web site you wish to configure integration for (see 5.2.1).
3. Double-click on the default integration instance.
4. Fill in all the values required in the **General** tab of the configuration for the instance.(See 5.2.1)
5. Test the Active Directory Connection.
6. Perform a manual import. (See 5.2.2)
7. Verify import in Digimaker.
8. Configure access rights for imported security groups in Digimaker by editing the roles.
9. Set up authentication method (See 5.3)

9. Troubleshooting Digimaker Server Manager

This section explains what you can do if Digimaker Server Manager does not work as expected.

9.1 Missing Registry key

An incorrect or missing register key is an installation issue.

To correct this problem, Run regedit and change the variable name, "InstallPath" to "InstallationPath" as shows in the figure below.

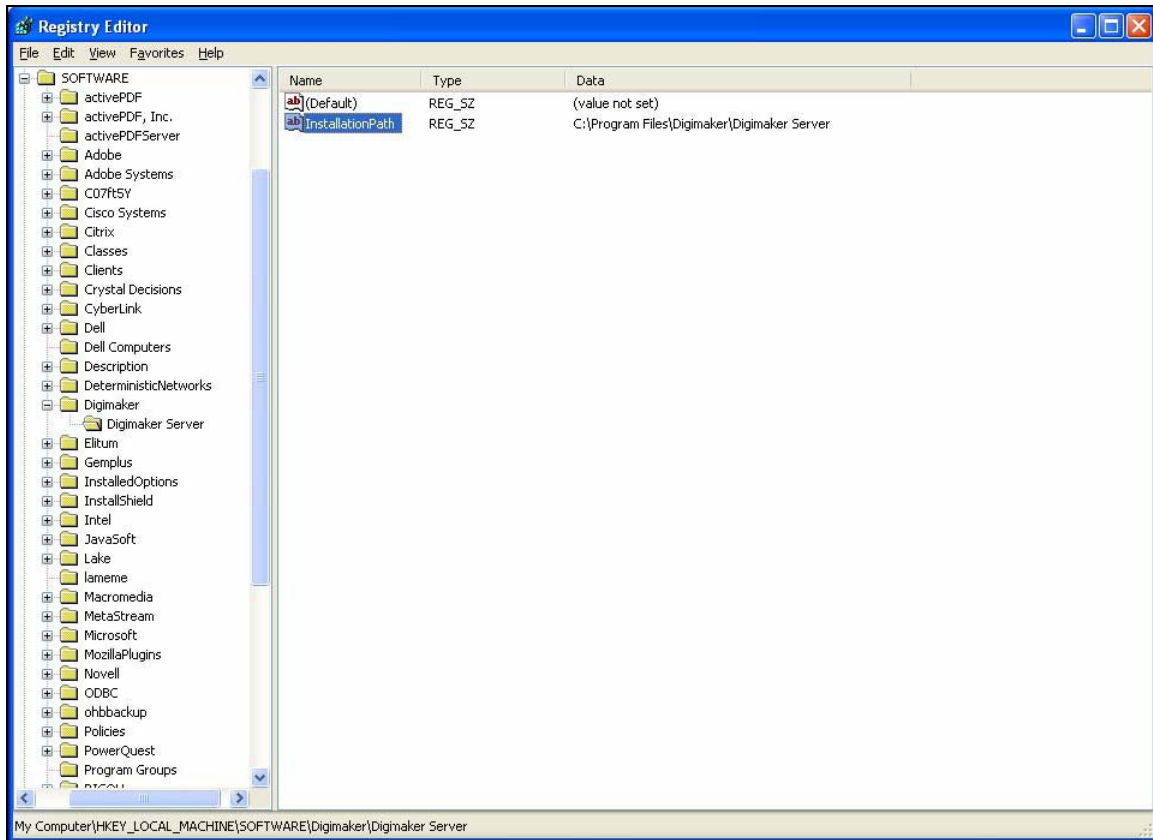


Figure 8-1: Changing the Variable Name, InstallPath

9.2 Certificate Not Installed.

You will see the following error message if the Digimaker Certificate is not installed.



Figure 8-2: Certificate Not Installed Error

To correct this problem, you will have to install the certificate manually

1. Click the file, **digimaker.cer**, which comes as part of your installation CD/package.

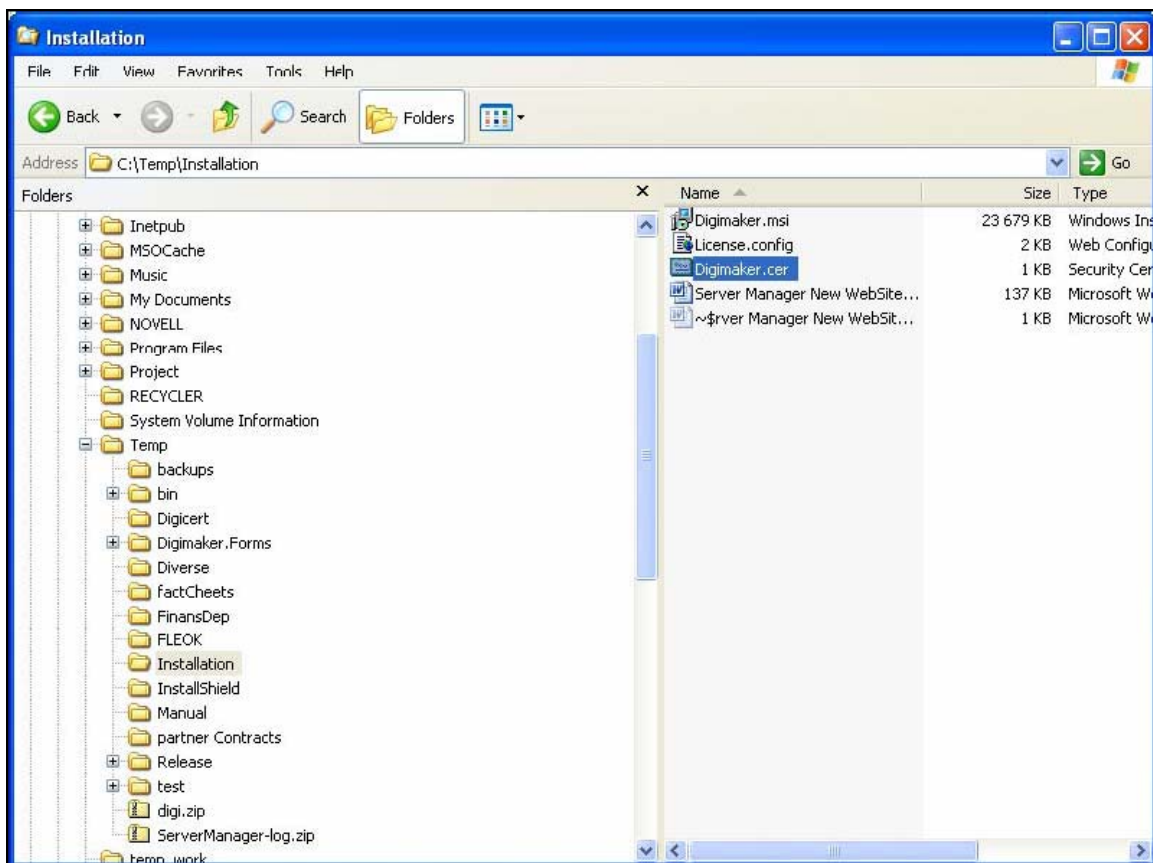


Figure 8-3: digimaker.cer

2. The Certificate Import wizard opens. Click **Next**.



Figure 8-4: Certificate Import Wizard

3. In the following screen shown below, choose the **Place all certificates in the following store** option.

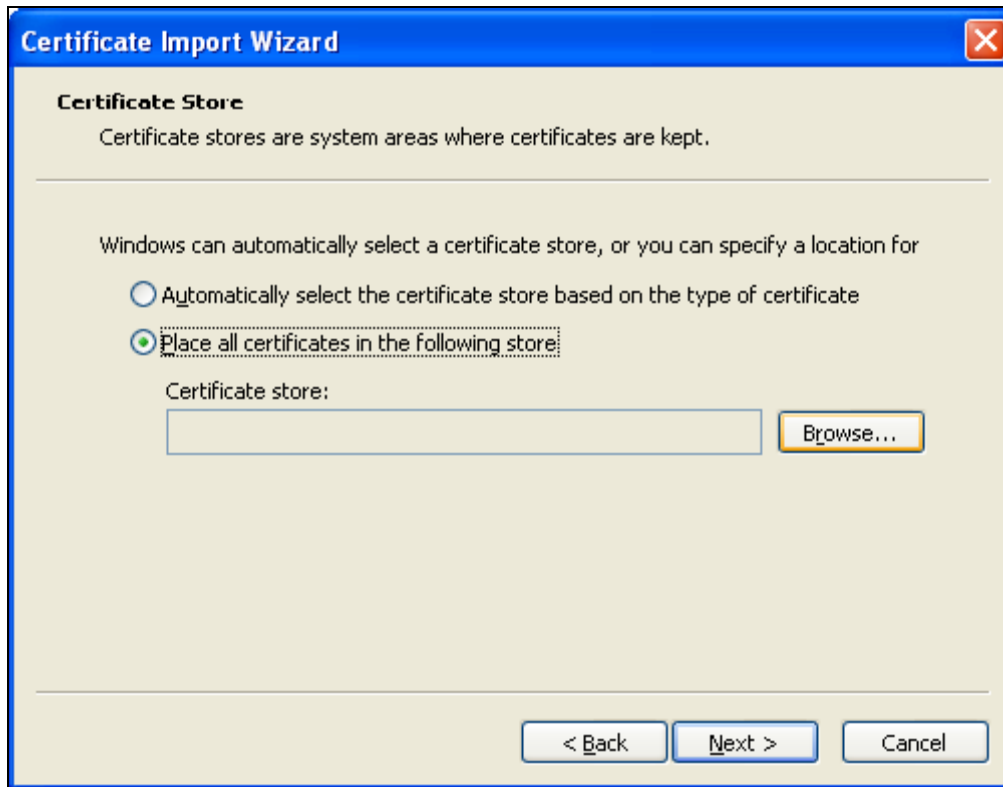


Figure 8-5: Choose Certificate Store

4. Click **Browse** to choose a location for placing all certificates.



Figure 8-6: Browse for Appropriate Location

5. Click **OK** after you choose a location in the **Select Certificate Store** window.
6. Click **Next** in the **Choose Certificate Store** window. The **Completing the Certificate Import** wizard opens

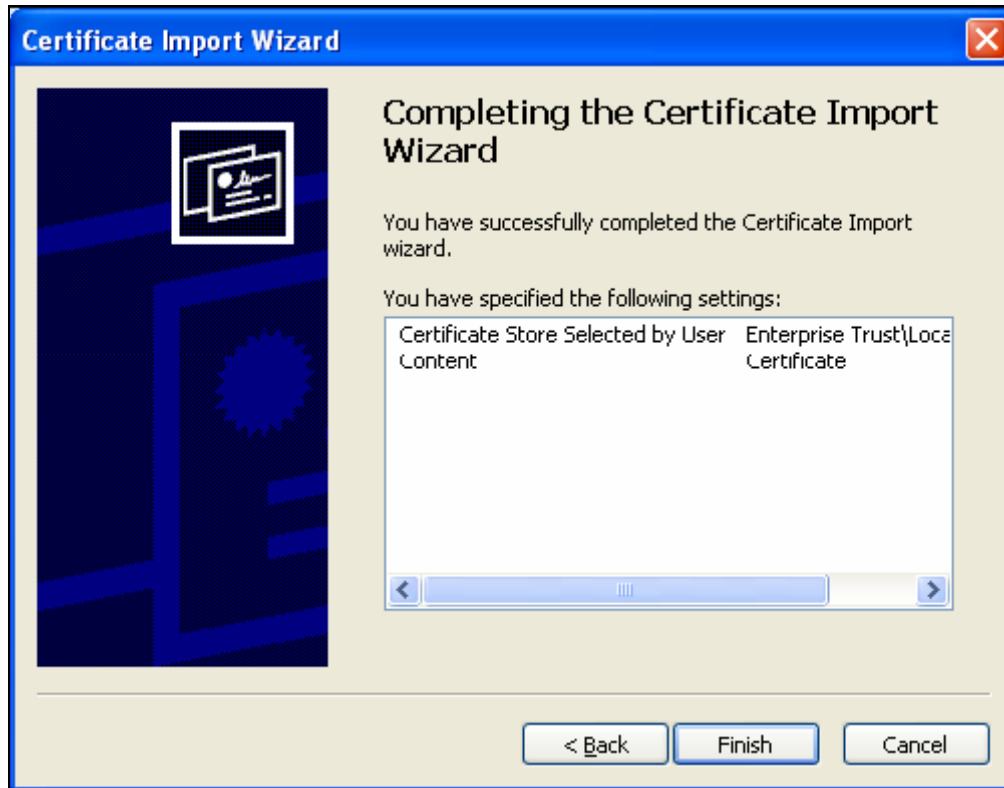


Figure 8-7: Complete the Certificate Import

7. Click **Finish**.